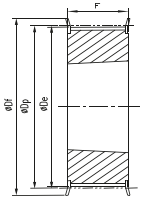
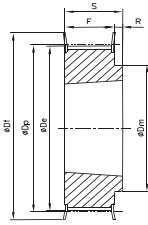


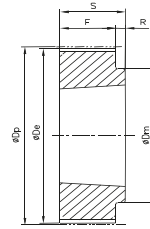
optibelt ZRS HTD Pulleys for Taper Bushings
Profile 5M



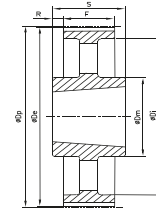
Ausf. 3F



Ausf. 8F



Ausf. 8

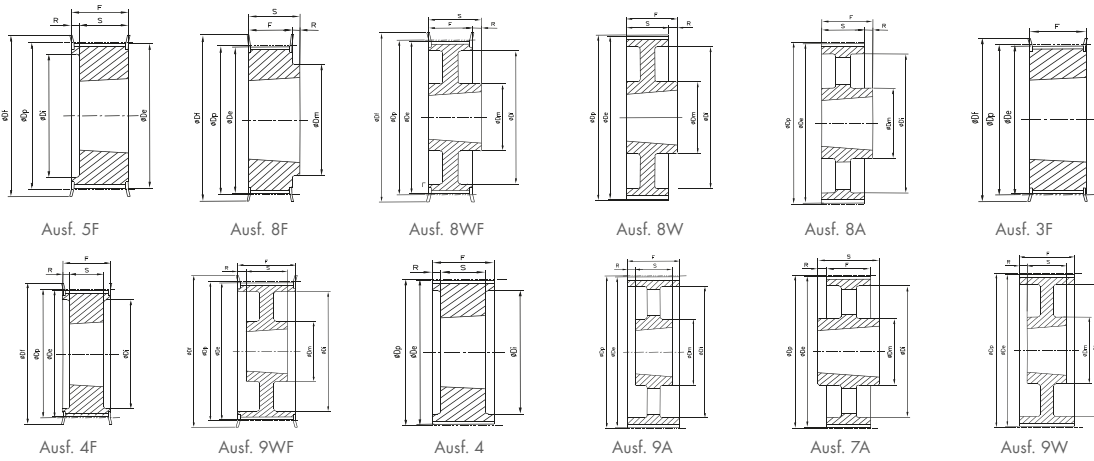


Ausf. 7A

Description	Number of teeth	Type	Material	D_p (mm)	D_e (mm)	D_f (mm)	F (mm)	S (mm)	R (mm)	D_m (mm)	Taper bushing	Weight without bushing (=kg)
5M - Pitch 5 mm for belt width 15 mm												
TB 34 5M 15	34	3F	ST	54.11	52.97	57	22	22	-	-	1008	0.190
TB 36 5M 15	36	3F	ST	57.30	56.16	60	22	22	-	-	1108	0.200
TB 38 5M 15	38	3F	ST	60.48	59.34	66.5	22	22	-	-	1108	0.250
TB 40 5M 15	40	3F	ST	63.66	62.52	71	22	22	-	-	1108	0.310
TB 44 5M 15	44	3F	ST	70.03	68.89	75	22	22	-	-	1108	0.400
TB 48 5M 15	48	8F	ST	76.39	75.25	83	22	25	3	59	1210	0.450
TB 56 5M 15	56	8F	ST	89.13	87.99	93	22	25	3	70	1210	0.670
TB 64 5M 15	64	8F	ST	101.86	100.72	106	22	25	3	80	1210	0.960
TB 72 5M 15	72	8	ST	114.59	113.45	-	22	25	3	92	1610	1.190
TB 80 5M 15	80	8	ST	127.32	126.18	-	22	25	3	92	1610	1.570
TB 90 5M 15	90	8	ST	143.24	142.10	-	22	25	3	92	1610	1.147
TB 112 5M 15	112	8	ST	178.25	177.11	-	20	32	12	110	2012	1.940
TB 136 5M 15	136	7A	ST	216.45	215.31	-	20	32	6	110	2012	3.060
TB 150 5M 15	150	7A	ST	238.73	237.59	-	20	32	6	110	2012	3.900

Taper bushing	1008	1108	1210	1610	2012
Bore d_2 from... to...	10-25	10-28	11-32	14-42	14-50

GG = Cast iron ST = Steel **We reserve the right to make technical changes.** * Non stock items.



Description	Number of teeth	Type	Material	D _p (mm)	D _e (mm)	D _f (mm)	F (mm)	S (mm)	R (mm)	D _m (mm)	D _i (mm)	Taper bushing	Weight without bushing (=kg)
8M - Pitch 8 mm for belt width 20 mm													
TB 22 8M 20	22	5F	ST	56.02	54.65	60	28	22	6	-	37	1008	0.240
TB 24 8M 20	24	5F	ST	61.12	59.75	66	28	22	6	-	44	1108	0.300
TB 26 8M 20	26	5F	ST	66.21	64.84	70	28	22	6	-	45	1108	0.360
TB 28 8M 20	28	5F	ST	71.30	70.08	75	28	22	6	-	50	1108	0.440
TB 30 8M 20	30	5F	ST	76.39	75.13	83	28	22	6	-	58	1108	0.530
TB 32 8M 20	32	5F	ST	81.49	80.16	87	28	25	3	-	63	1610	0.420
TB 34 8M 20	34	5F	ST	86.58	85.22	91	28	25	3	-	64	1610	0.550
TB 36 8M 20	36	5F	ST	91.67	90.30	97	28	25	3	-	68	1610	0.680
TB 38 8M 20	38	5F	ST	96.77	95.39	102	28	25	3	-	72	1610	0.800
TB 40 8M 20	40	5F	ST	101.86	100.49	106	28	25	3	-	76	1610	1.000
TB 44 8M 20	44	8F	ST	112.05	110.67	120	28	32	4	93	-	2012	1.200
TB 48 8M 20	48	8F	ST	122.23	120.86	128	28	32	4	96	-	2012	1.600
TB 56 8M 20	56	8F	ST	142.60	141.23	150	28	32	4	110	-	2012	2.400
TB 64 8M 20	64	8WF	ST	162.97	161.60	168	28	32	4	110	137	2012	2.700
TB 72 8M 20	72	8WF	ST	183.35	181.97	192	28	32	4	110	158	2012	3.300
TB 80 8M 20	80	8W	GG	203.72	202.35	-	28	32	4	110	180	2012	3.500
TB 90 8M 20	90	8A	GG	229.18	227.81	-	28	32	4	110	204	2012	3.650
8M - Pitch 8 mm for belt width 30 mm													
TB 22 8M 30	22	5F	ST	56.02	54.65	60	38	22	16	-	37	1008	0.290
TB 24 8M 30	24	5F	ST	61.12	59.75	66	38	22	16	-	44	1108	0.380
TB 26 8M 30	26	5F	ST	66.21	64.84	70	38	22	16	-	44	1108	0.450
TB 28 8M 30	28	5F	ST	71.30	70.08	75	38	25	13	-	50	1210	0.500
TB 30 8M 30	30	3F	ST	76.39	75.13	83	38	38	-	-	-	1615	0.450
TB 32 8M 30	32	3F	ST	81.49	80.16	87	38	38	-	-	-	1615	0.590
TB 34 8M 30	34	3F	ST	86.58	85.22	91	38	38	-	-	-	1615	0.770
TB 36 8M 30	36	3F	ST	91.67	90.30	97	38	38	-	-	-	1615	0.960
TB 38 8M 30	38	3F	ST	96.77	95.39	102	38	38	-	-	-	1615	1.150
TB 40 8M 30	40	3F	ST	101.86	100.49	106	38	38	-	-	-	1615	1.340
TB 44 8M 30	44	4F	ST	112.05	110.67	120	38	32	3	-	86	2012	1.330
TB 48 8M 30	48	4F	ST	122.23	120.86	128	38	32	3	-	90	2012	1.780
TB 56 8M 30	56	4F	ST	142.60	141.23	150	38	32	3	-	110	2012	3.760
TB 64 8M 30	64	8F	ST	162.97	161.60	168	38	45	7	125	-	2517	4.200
TB 72 8M 30	72	8WF	ST	183.35	181.97	192	38	45	7	125	158	2517	4.300
TB 80 8M 30	80	8W	GG	203.72	202.35	-	38	45	7	125	180	2517	4.600
TB 90 8M 30	90	8A	GG	229.18	227.81	-	38	45	7	125	204	2517	5.000
TB 112 8M 30	112	8A	GG	285.21	283.83	-	38	45	7	125	254	2517	6.200
TB 144 8M 30	144	8A	GG	366.69	365.32	-	38	45	7	125	336	2517	9.000

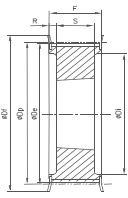
**optibelt ZRS HTD Pulleys for Taper Bushings
Profile 8M**



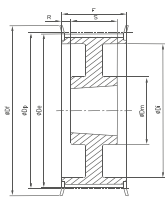
Description	Number of teeth	Type	Material	D _p (mm)	D _e (mm)	D _f (mm)	F (mm)	S (mm)	R (mm)	D _m (mm)	D _i (mm)	Taper bushing	Weight without bushing (=kg)
8M - Pitch 8 mm for belt width 50 mm													
TB 28 8M 50	28	4F	ST	71.30	70.08	75	60	25	17.5	-	50	1210	0.600
TB 30 8M 50	30	5F	ST	76.39	75.13	83	60	38	22	-	58	1615	0.650
TB 32 8M 50	32	5F	ST	81.49	80.16	87	60	38	22	-	62	1615	0.820
TB 34 8M 50	34	5F	ST	86.58	85.22	91	60	38	22	-	65	1615	1.060
TB 36 8M 50	36	5F	ST	91.67	90.30	97	60	38	22	-	68	1615	1.300
TB 38 8M 50	38	5F	ST	96.77	95.39	102	60	38	22	-	72	1615	1.600
TB 40 8M 50	40	4F	ST	101.86	100.49	106	60	32	14	-	82	2012	1.710
TB 44 8M 50	44	4F	ST	112.05	110.67	120	60	32	14	-	91	2012	1.780
TB 48 8M 50	48	4F	ST	122.23	120.86	128	60	32	14	-	95	2012	2.300
TB 56 8M 50	56	4F	ST	142.60	141.23	150	60	45	7.5	-	116	2517	3.400
TB 64 8M 50	64	4F	ST	162.97	161.60	168	60	45	7.5	-	137	2517	5.000
TB 72 8M 50	72	9WF	ST	183.35	181.97	192	60	45	7.5	125	158	2517	6.700
TB 80 8M 50	80	4	GG	203.72	202.35	-	60	51	4.5	-	180	3020	8.800
TB 90 8M 50	90	9W	GG	229.18	227.81	-	60	51	4.5	170	204	3020	10.000
TB 112 8M 50	112	9W	GG	285.21	283.83	-	60	51	4.5	170	260	3020	12.000
TB 144 8M 50	144	9A	GG	366.69	365.32	-	60	51	4.5	170	341	3020	15.200
TB 168 8M 50	168	7A	GG	427.81	426.44	-	60	65	2.5	198	395	3525	16.400
TB 192 8M 50	192	7A	GG	488.92	487.55	-	60	65	2.5	198	455	3525	21.800
8M - Pitch 8 mm for belt width 85 mm													
TB 34 8M 85	34	4F	ST	86.58	85.22	91	95	38	28.5	-	65	1615	1.430
TB 36 8M 85	36	4F	ST	91.67	90.30	97	95	38	28.5	-	68	1615	1.870
TB 38 8M 85	38	4F	ST	96.77	95.39	102	95	38	28.5	-	72	1615	2.200
TB 40 8M 85	40	4F	ST	101.86	100.49	106	95	32	31.5	-	82	2012	1.780
TB 44 8M 85	44	4F	ST	112.05	110.67	120	95	32	31.5	-	91	2012	2.300
TB 48 8M 85	48	4F	ST	122.23	120.86	128	95	45	25	-	100	2517	2.660
TB 56 8M 85	56	4F	ST	142.60	141.23	150	95	45	25	-	117	2517	4.450
TB 64 8M 85	64	4F	ST	162.97	161.60	168	95	45	25	-	137	2517	6.200
TB 72 8M 85	72	4F	ST	183.35	181.97	192	95	51	22	-	158	3020	8.000
TB 80 8M 85	80	4	GG	203.72	202.35	-	95	51	22	-	180	3020	10.000
TB 90 8M 85	90	9W	GG	229.18	227.81	-	95	51	22	170	204	3020	10.800
TB 112 8M 85	112	9W	GG	285.21	283.83	-	95	51	22	170	260	3020	15.000
TB 144 8M 85	144	9A	GG	366.69	365.32	-	95	65	15	198	336	3525	20.000
TB 168 8M 85	168	9A	GG	427.81	426.44	-	95	65	15	198	395	3525	23.000
TB 192 8M 85	192	9A	GG	488.92	487.55	-	95	65	15	198	455	3525	28.500

Taper bushing	1008	1108	1210	1610	1615	2012	2517	3020	3525
Bore d ₂ (mm) from... to...	10-25	10-28	11-32	14-42	14-42	14-50	16-65	25-75	35-90

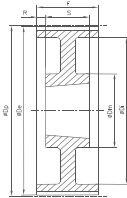
GG = Cast iron ST = Steel **We reserve the right to make technical changes.** * Non stock items.



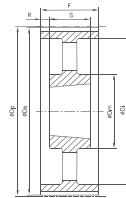
Ausf. 4F



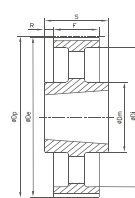
Ausf. 9WF



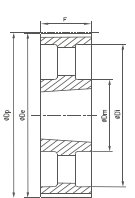
Ausf. 9W



Ausf. 9A



Ausf. 7A



Ausf. 3A

Description	Number of teeth	Type	Material	D _p (mm)	D _e (mm)	D _f (mm)	F (mm)	S (mm)	R (mm)	D _m (mm)	D _i (mm)	Taper bushing	Weight without bushing (≈kg)
14M - Pitch 14 mm for belt width 40 mm													
TB 28 14M 40	28	4F	ST	124.78	122.12	128	54	32	11	-	94	2012	2.000
TB 29 14M 40	29	4F	ST	129.23	126.57	138	54	32	11	-	98	2012	2.380
TB 30 14M 40	30	4F	ST	133.69	130.99	138	54	32	11	-	98	2012	2.650
TB 32 14M 40	32	4F	ST	142.60	139.88	154	54	32	11	-	108	2012	3.400
TB 34 14M 40	34	4F	ST	151.52	148.79	160	54	45	4.5	-	110	2517	3.870
TB 36 14M 40	36	4F	ST	160.43	157.68	168	54	45	4.5	-	120	2517	4.800
TB 38 14M 40	38	4F	ST	169.34	166.60	183	54	45	4.5	-	130	2517	5.400
TB 40 14M 40	40	4F	ST	178.25	175.49	188	54	45	4.5	-	138	2517	6.000
TB 44 14M 40	44	4F	ST	196.08	193.28	211	54	51	1.5	-	155	3020	7.800
TB 48 14M 40	48	4F	ST	213.90	211.11	226	54	51	1.5	-	170	3020	9.400
TB 56 14M 40	56	9WF	ST	249.55	246.76	256	54	51	1.5	170	208	3020	10.800
TB 64 14M 40	64	9WF	GG	285.21	282.41	296	54	51	1.5	170	240	3020	13.400
TB 72 14M 40	72	9W	GG	320.86	318.06	-	54	51	1.5	170	280	3020	15.200
TB 80 14M 40	80	9A	GG	356.51	353.71	-	54	51	1.5	170	315	3020	16.000
TB 90 14M 40	90	9A	GG	401.07	398.28	-	54	51	1.5	170	360	3020	17.800
TB 112 14M 40	112	9A	GG	499.11	496.32	-	54	51	1.5	170	457	3020	25.600
TB 144 14M 40	144	9A	GG	641.71	638.92	-	54	51	1.5	170	600	3020	32.000
TB 168 14M 40	168	9A	GG	748.66	745.87	-	54	51	1.5	170	706	3020	44.000
TB 192 14M 40	192	9A	GG	855.62	852.82	-	54	51	1.5	170	813	3020	49.000
TB 216 14M 40	216	9A	GG	962.57	959.77	-	54	51	1.5	170	920	3020	55.000
14M - Pitch 14 mm for belt width 55 mm													
TB 28 14M 55	28	4F	ST	124.78	122.12	128	70	32	19	-	98	2012	2.200
TB 29 14M 55	29	4F	ST	129.23	126.57	138	70	32	19	-	100	2517	2.740
TB 30 14M 55	30	4F	ST	133.69	130.99	138	70	45	12.5	-	100	2517	2.700
TB 32 14M 55	32	4F	ST	142.60	139.88	154	70	45	12.5	-	108	2517	3.660
TB 34 14M 55	34	4F	ST	151.52	148.79	160	70	45	12.5	-	110	2517	4.550
TB 36 14M 55	36	4F	ST	160.43	157.68	168	70	45	12.5	-	120	2517	5.200
TB 38 14M 55	38	4F	ST	169.34	166.60	183	70	45	12.5	-	130	2517	6.200
TB 40 14M 55	40	4F	ST	178.25	175.49	188	70	45	12.5	-	138	2517	7.000
TB 44 14M 55	44	4F	ST	196.08	193.28	211	70	51	9.5	-	155	3020	8.600
TB 48 14M 55	48	4F	ST	213.90	211.11	226	70	51	9.5	-	170	3020	10.400
TB 56 14M 55	56	9WF	ST	249.55	246.76	256	70	51	9.5	170	208	3020	12.000
TB 64 14M 55	64	9WF	GG	285.21	282.41	296	70	51	9.5	170	242	3020	14.500
TB 72 14M 55	72	9W	GG	320.86	318.06	-	70	51	9.5	170	280	3020	16.200
TB 80 14M 55	80	9A	GG	356.51	353.71	-	70	51	9.5	170	315	3020	17.500
TB 90 14M 55	90	9A	GG	401.07	398.28	-	70	51	9.5	170	360	3020	20.100
TB 112 14M 55	112	9A	GG	499.11	496.32	-	70	51	9.5	170	457	3020	28.400
TB 144 14M 55	144	9A	GG	641.71	638.92	-	70	51	9.5	170	600	3020	36.200
TB 168 14M 55	168	9A	GG	748.66	745.87	-	70	51	9.5	170	706	3020	49.000
TB 192 14M 55	192	9A	GG	855.62	852.82	-	70	51	9.5	170	813	3020	53.000
TB 216 14M 55	216	7A	GG	962.57	959.76	-	70	89	9.5	190	920	3535	65.800
14M - Pitch 14 mm for belt width 85 mm													
TB 28 14M 85	28	4F	GG	127.0	102.0	102.0	45	-	28.5	-	98	2517	2.700

Description	Number of teeth	Type	Material	D _p (mm)	D _e (me)	D _f (mm)	F (mm)	S (mm)	R (mm)	D _m (mm)	D _i (mm)	Taper bushing	Weight without bushing (=kg)
TB 29 14M 85	29	4F	ST	129.23	126.57	138	102	45	28.5	-	100	2517	3.400
TB 30 14M 85	30	4F	ST	133.69	130.99	138	102	45	28.5	-	100	2517	3.750
TB 32 14M 85	32	4F	ST	142.60	139.88	154	102	45	28.5	-	108	2517	4.800
TB 34 14M 85	34	4F	ST	151.52	148.79	160	102	45	28.5	-	110	2517	6.000
TB 36 14M 85	36	4F	ST	160.43	157.68	168	102	51	25.5	-	120	3020	5.800
TB 38 14M 85	38	4F	ST	169.34	166.60	183	102	51	25.5	-	130	3020	6.800
TB 40 14M 85	40	4F	ST	178.25	175.49	188	102	51	25.5	-	138	3020	8.000
TB 44 14M 85	44	4F	ST	196.08	193.28	211	102	51	25.5	-	155	3030	11.800
TB 48 14M 85	48	4F	ST	213.90	211.11	226	102	51	25.5	-	170	3030	15.100
TB 56 14M 85	56	4F	ST	249.55	246.76	256	102	65	18.5	-	210	3525	19.000
TB 64 14M 85	64	9WF	GG	285.21	282.41	296	102	65	18.5	190	242	3525	23.000
TB 72 14M 85	72	9W	GG	320.86	318.06	-	102	65	18.5	190	280	3525	25.000
TB 80 14M 85	80	9A	GG	356.51	353.71	-	102	65	18.5	190	315	3525	26.000
TB 90 14M 85	90	9A	GG	401.07	398.28	-	102	65	18.5	190	360	3525	27.800
TB 112 14M 85	112	9A	GG	499.11	496.32	-	102	65	18.5	190	457	3525	36.500
TB 144 14M 85	144	9A	GG	641.71	638.92	-	102	65	18.5	190	600	3525	48.000
TB 168 14M 85	168	9A	GG	748.66	745.87	-	102	65	18.5	190	706	3525	60.000
TB 192 14M 85	192	3A	GG	855.62	852.82	-	102	102	-	190	813	4040	86.000
TB 216 14M 85	216	3A	GG	962.57	959.77	-	102	102	-	190	920	4040	91.500
14M - Pitch 14 mm for belt width 115 mm													
TB 28 14M 115	28	4F	ST	124.78	122.12	128	133	45	44	-	98	2517	3.770
TB 29 14M 115	29	4F	ST	129.23	126.57	138	133	45	44	-	100	2517	4.000
TB 30 14M 115	30	4F	ST	133.69	130.99	138	133	45	44	-	100	2517	5.000
TB 32 14M 115	32	4F	ST	142.60	139.88	154	133	45	44	-	108	2517	6.800
TB 34 14M 115	34	4F	ST	151.52	148.79	160	133	45	44	-	110	2517	6.800
TB 36 14M 115	36	4F	ST	160.43	157.68	168	133	51	41	-	120	3020	7.000
TB 38 14M 115	38	4F	ST	169.34	166.60	183	133	51	41	-	130	3020	8.400
TB 40 14M 115	40	4F	ST	178.25	175.49	188	133	51	41	-	138	3020	9.200
TB 44 14M 115	44	4F	ST	196.08	193.28	211	133	76	28.5	-	155	3030	14.000
TB 48 14M 115	48	4F	ST	213.90	211.11	226	133	76	28.5	-	170	3030	17.100
TB 56 14M 115	56	4F	ST	249.55	246.76	256	133	89	22	-	208	3535	24.800
TB 64 14M 115	64	9WF	GG	285.21	282.41	296	133	89	22	190	240	3535	27.000
TB 72 14M 115	72	9W	GG	320.86	318.06	-	133	89	22	190	280	3535	29.000
TB 80 14M 115	80	9A	GG	356.51	353.71	-	133	89	22	190	315	3535	32.000
TB 90 14M 115	90	9A	GG	401.07	398.28	-	133	89	22	190	360	3535	36.500
TB 112 14M 115	112	9A	GG	499.11	496.32	-	133	89	22	190	457	3535	46.000
TB 144 14M 115	144	9A	GG	641.71	638.92	-	133	102	15.5	230	600	4040	68.000
TB 168 14M 115	168	9A	GG	748.66	745.87	-	133	102	15.5	230	706	4040	82.600
TB 192 14M 115	192	9A	GG	855.62	852.82	-	133	102	15.5	230	813	4040	96.000
TB 216 14M 115	216	9A	GG	962.57	959.76	-	133	102	15.5	230	920	4040	107.000
14M - Pitch 14 mm for belt width 170 mm													
TB 38 14M 170*	38	4F	ST	169.34	166.60	183	187	76	55.5	-	130	3030	11.700
TB 40 14M 170*	40	4F	ST	178.25	175.49	188	187	76	55.5	-	138	3030	13.000
TB 44 14M 170*	44	4F	ST	196.08	193.28	211	187	89	49	-	153	3535	15.000
TB 48 14M 170*	48	4F	ST	213.90	211.11	226	187	89	49	-	170	3535	19.000
TB 56 14M 170*	56	4F	ST	249.55	246.76	256	187	89	49	-	208	3535	28.500
TB 64 14M 170*	64	4F	GG	285.21	282.41	296	187	102	42.5	-	240	4040	41.000
TB 72 14M 170*	72	9W	GG	320.86	318.06	-	187	102	42.5	230	280	4040	46.900
TB 80 14M 170*	80	9W	GG	356.51	353.71	-	187	102	42.5	230	315	4040	48.000
TB 90 14M 170*	90	9A	GG	401.07	398.28	-	187	102	42.5	230	360	4040	52.500

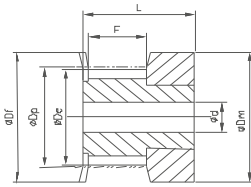


optibelt **ZRS** HTD Pulleys for Taper Bushings
Profile 14M

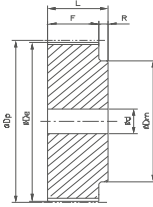
Description	Number of teeth	Type	Material	D _p (mm)	D _e (me)	D _f (mm)	F (mm)	S (mm)	R (mm)	D _m (mm)	D _i (mm)	Taper bushing	Weight without bushing (=kg)
TB 112 14M 170*	112	9A	GG	499.11	496.32	-	187.0	127	30	265	457	5050	74.500
TB 144 14M 170*	144	9A	GG	641.71	638.92	-	187.0	127	30	265	600	5050	91.000
TB 168 14M 170*	168	9A	GG	748.66	745.87	-	187.0	127	30	265	706	5050	116.000
TB 192 14M 170*	192	9A	GG	855.62	852.82	-	187.0	127	30	265	813	5050	134.000
TB 216 14M 170*	216	9A	GG	962.57	959.77	-	187.0	127	30	265	920	5050	146.500

Taper bushing	2012	2517	3020	3030	3525	3535	4040	5050
Bore d ₂ (mm) from... to...	14-50	16-65	25-75	35-75	35-90	35-90	40-100	70-125

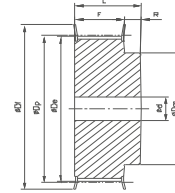
GG = Cast iron ST = Steel We reserve the right to make technical changes. * Non stock items.



Ausf. 1F



Ausf. 6



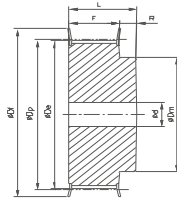
Ausf. 6F

Description	Number of teeth	Type	Material	D _p (mm)	D _e (mm)	D _f (mm)	F (mm)	L (mm)	D _m (mm)	Pilot bore d (mm)	Finished bore hole d _{max} (mm)	Weight (=kg)
3M - Pitch 3 mm for belt width 6 mm												
10 3M 6*	10	1F	AL	9.55	8.79	13	7.2	14.5	13	-	3	-
12 3M 6*	12	1F	AL	11.46	10.70	15	7.2	14.5	15	-	5	-
14 3M 6*	14	1F	AL	13.37	12.61	16	7.2	14.5	16	-	6	-
15 3M 6*	15	1F	AL	14.32	13.56	17.5	7.2	14.5	17.5	-	6	-
16 3M 6*	16	6F	AL	15.28	14.52	17.5	9.8	17.5	10	-	7	-
18 3M 6*	18	6F	AL	17.19	16.43	20	9.8	17.5	11	-	8	-
20 3M 6*	20	6F	AL	19.10	18.34	23	9.8	17.5	13	-	9	-
21 3M 6*	21	6F	AL	20.05	19.29	25	9.8	17.5	13	-	9	-
22 3M 6*	22	6F	AL	21.01	20.25	25	9.8	17.5	13	-	9	-
24 3M 6*	24	6F	AL	22.92	22.16	25	9.8	17.5	13	-	9	-
26 3M 6*	26	6F	AL	24.83	24.07	28	9.8	17.5	16	-	11	-
28 3M 6*	28	6F	AL	26.74	25.98	32	9.8	17.5	18	-	12	-
30 3M 6*	30	6F	AL	28.65	27.89	32	9.8	17.5	20	-	14	-
32 3M 6*	32	6F	AL	30.56	29.80	36	9.8	17.5	22	-	15	-
36 3M 6*	36	6F	AL	34.38	33.62	39	10.3	18	26	-	16	-
40 3M 6*	40	6F	AL	38.20	37.44	42	10.3	18	28	-	18	-
44 3M 6*	44	6F	AL	42.02	41.26	48	10.3	18	33	-	20	-
48 3M 6*	48	6	AL	45.84	45.08	-	10.3	18.6	33	8	20	-
60 3M 6*	60	6	AL	57.30	56.54	-	10.3	18.6	33	8	20	-
72 3M 6*	72	6	AL	68.75	67.99	-	10.3	18.6	33	8	20	-
3M - Pitch 3 mm for belt width 9 mm												
10 3M 9	10	1F	AL	9.55	8.79	13	10.2	17.5	13	-	3	0.004
12 3M 9	12	1F	AL	11.46	10.70	15	10.2	17.5	15	-	5	0.006
14 3M 9	14	1F	AL	13.37	12.61	16	10.2	17.5	16	-	6	0.007
15 3M 9	15	1F	AL	14.32	13.56	17.5	10.2	17.5	17.5	-	6	0.008
16 3M 9	16	1F	AL	15.28	14.52	17.5	12.8	20.6	10	-	7	0.007
18 3M 9	18	6F	AL	17.19	16.43	20	12.8	20.6	10.6	-	8	0.008
20 3M 9	20	6F	AL	19.10	18.34	23	12.8	20.6	12.4	-	9	0.010
21 3M 9	21	6F	AL	20.05	19.29	25	12.8	20.6	13	-	9	0.013
22 3M 9	22	6F	AL	21.01	20.25	25	12.8	20.6	13	-	9	0.014
24 3M 9	24	6F	AL	22.92	22.16	25	12.8	20.6	13	-	9	0.016
26 3M 9	26	6F	AL	24.83	24.07	28	12.8	20.6	16	-	11	0.018
28 3M 9	28	6F	AL	26.74	25.98	32	12.8	20.6	18	-	12	0.024
30 3M 9	30	6F	AL	28.65	27.89	32	12.8	20.6	20	-	14	0.028
32 3M 9	32	6F	AL	30.56	29.80	36	12.8	20.6	22	-	15	0.032
36 3M 9	36	6F	AL	34.38	33.62	39	13.4	22.2	26	-	16	0.045
40 3M 9	40	6F	AL	38.20	37.44	42	13.4	22.2	28	-	18	0.055
44 3M 9	44	6F	AL	42.02	41.26	48	13.4	22.2	33	-	20	0.074
48 3M 9	48	6	AL	45.84	45.08	-	13.4	22.2	33	8	20	0.074
60 3M 9	60	6	AL	57.30	56.54	-	13.4	22.2	33	8	20	0.106
72 3M 9	72	6	AL	68.75	67.99	-	13.4	22.2	33	8	20	0.145
3M - Pitch 3 mm for belt width 15 mm												
10 3M 15	10	1F	AL	9.55	8.79	13	17	26	13	-	3	0.006

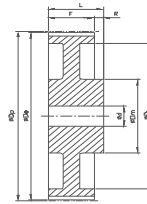


Description	Number of teeth	Type	Material	D _p (mm)	D _e (mm)	D _i (mm)	F (mm)	L (mm)	D _m (mm)	Pilot bore d (mm)	Finished bore hole d _{max} (mm)	Weight (≈kg)
12 3M 15	12	1F	AL	11.46	10.70	15	17	26	15	-	5	0.008
14 3M 15	14	1F	AL	13.37	12.61	16	17	26	16	-	6	0.010
15 3M 15	15	1F	AL	14.32	13.56	17.5	17	26	17.5	-	6	0.012
16 3M 15	16	6F	AL	15.28	14.52	17.5	19.5	26	10	-	7	0.010
18 3M 15	18	6F	AL	17.19	16.43	20	19.5	26	11	-	8	0.012
20 3M 15	20	6F	AL	19.10	18.34	23	19.5	26	13	-	9	0.014
21 3M 15	21	6F	AL	20.05	19.29	25	19.5	26	14	-	9	0.016
22 3M 15	22	6F	AL	21.01	20.25	25	19.5	26	14	-	9	0.018
24 3M 15	24	6F	AL	22.92	22.16	25	19.5	26	14	-	9	0.020
26 3M 15	26	6F	AL	24.83	24.07	28	19.5	26	16	-	11	0.027
28 3M 15	28	6F	AL	26.74	25.98	32	19.5	26	18	-	12	0.030
30 3M 15	30	6F	AL	28.65	27.89	32	19.5	26	20	-	14	0.035
32 3M 15	32	6F	AL	30.56	29.80	36	19.5	26	22	-	15	0.042
36 3M 15	36	6F	AL	34.38	33.62	39	20	30	26	-	16	0.060
40 3M 15	40	6F	AL	38.20	37.44	42	20	30	28	-	18	0.075
44 3M 15	44	6F	AL	42.02	41.26	48	20	30	33	-	20	0.100
48 3M 15	48	6	AL	45.84	45.08	-	20	30	33	8	20	0.103
60 3M 15	60	6	AL	57.30	56.54	-	20	30	33	8	20	0.150
72 3M 15	72	6	AL	68.75	67.99	-	20	30	33	8	20	0.212

AL = Aluminium ST = Steel GG = Cast iron We reserve the right to make technical changes. * Non stock items.



Ausf. 6F



Ausf. 6W

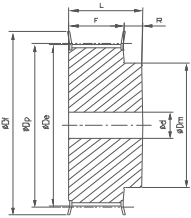
Description	Number of teeth	Type	Material	D _p (mm)	D _e (mm)	D _f (mm)	D _i (mm)	F (mm)	L (mm)	D _m (mm)	Pilot bore d (mm)	Finished bore hole d _{max} (mm)	Weight (≈kg)
5M - Pitch 5 mm for belt width 9 mm													
12 5M 9	12	6F	ST	19.10	17.96	23	-	14.5	20	12	-	7	0.028
14 5M 9	14	6F	ST	22.28	21.14	25	-	14.5	20	13	-	8	0.034
15 5M 9	15	6F	ST	23.87	22.73	28	-	14.5	20	16	-	10	0.042
16 5M 9	16	6F	ST	25.46	24.32	28	-	14.5	20	16.2	-	10	0.050
18 5M 9	18	6F	ST	28.65	27.51	32	-	14.5	20	20	-	12	0.070
20 5M 9	20	6F	ST	31.83	30.69	36	-	14.5	22.5	23	-	14	0.094
21 5M 9	21	6F	ST	33.42	32.28	38	-	14.5	22.5	24	-	14	0.110
22 5M 9	22	6F	ST	35.01	33.87	39	-	14.5	22.5	25.5	-	14	0.118
24 5M 9	24	6F	ST	38.20	37.06	42	-	14.5	22.5	27	-	16	0.145
26 5M 9	26	6F	ST	41.38	40.24	44	-	14.5	22.5	30	-	18	0.170
28 5M 9	28	6F	ST	44.56	43.42	48	-	14.5	22.5	30.5	-	18	0.200
30 5M 9	30	6F	ST	47.75	46.61	51	-	14.5	22.5	35	-	20	0.236
32 5M 9	32	6F	ST	50.93	49.79	54	-	14.5	22.5	38	8	22	0.270
36 5M 9	36	6F	ST	57.30	56.16	60	-	14.5	22.5	38	8	22	0.324
40 5M 9	40	6F	ST	63.66	62.52	71	-	14.5	22.5	38	8	22	0.400
44 5M 9	44	6W	AL	70.03	68.89	-	54	14.5	25.5	38	8	22	0.170
48 5M 9	48	6W	AL	76.39	75.25	-	61	14.5	25.5	45	8	25	0.182
60 5M 9	60	6W	AL	95.49	94.35	-	80	14.5	25.5	45	8	25	0.230
72 5M 9	72	6W	AL	114.59	113.45	-	100	14.5	25.5	45	8	25	0.270
5M - Pitch 5 mm for belt width 15 mm													
12 5M 15	12	6F	ST	19.10	17.96	23	-	20.5	20.5	13	-	7	0.034
14 5M 15	14	6F	ST	22.28	21.14	25	-	20.5	20.5	14	-	8	0.046
15 5M 15	15	6F	ST	23.87	22.73	28	-	20.5	20.5	16	-	10	0.056
16 5M 15	16	6F	ST	25.46	24.32	28	-	20.5	20.5	16.5	-	10	0.064
18 5M 15	18	6F	ST	28.65	27.51	32	-	20.5	20.5	20	-	12	0.086
20 5M 15	20	6F	ST	31.83	30.69	36	-	20.5	20.5	23	-	14	0.112
21 5M 15	21	6F	ST	33.42	32.28	38	-	20.5	20.5	24	-	14	0.130
22 5M 15	22	6F	ST	35.01	33.87	39	-	20.5	20.5	25.5	-	14	0.140
24 5M 15	24	6F	ST	38.20	37.06	42	-	20.5	20.5	27	-	16	0.180
26 5M 15	26	6F	ST	41.38	40.24	44	-	20.5	20.5	30	-	18	0.220
28 5M 15	28	6F	ST	44.56	43.42	48	-	20.5	20.5	30.5	-	18	0.250
30 5M 15	30	6F	ST	47.75	46.61	51	-	20.5	20.5	35	-	20	0.300
32 5M 15	32	6F	ST	50.93	49.79	54	-	20.5	20.5	38	8	22	0.350
36 5M 15	36	6F	ST	57.30	56.16	60	-	20.5	20.5	38	8	22	0.426
40 5M 15	40	6F	ST	63.66	62.52	71	-	20.5	20.5	38	8	22	0.520
44 5M 15	44	6W	AL	70.03	68.89	-	54	20.5	20.5	38	8	22	0.225
48 5M 15	48	6W	AL	76.39	75.25	-	61	20.5	20.5	38	8	25	0.187
60 5M 15	60	6W	AL	95.49	94.35	-	80	20.5	20.5	50	8	25	0.305
72 5M 15	72	6W	AL	114.59	113.45	-	100	20.5	20.5	50	8	25	0.375
5M - Pitch 5 mm for belt width 25 mm													
12 5M 25	12	6F	ST	19.10	17.96	23	-	30.5	36	12	-	7	0.050
14 5M 25	14	6F	ST	22.28	21.14	25	-	30.5	36	13	-	8	0.070
15 5M 25	15	6F	ST	23.87	22.73	28	-	30.5	36	16	-	10	0.080



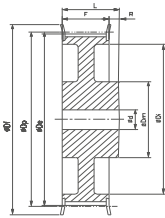
optibelt ZRS HTD Pulleys for Plain Boring Profile 5M

Description	Number of teeth	Type	Material	D _p (mm)	D _e (mm)	D _i (mm)	D ₁ (mm)	F (mm)	L (mm)	D _m (mm)	Pilot bore d (mm)	Finished bore hole d _{max} (mm)	Weight (≈kg)
16 5M 25	16	6F	ST	25.46	24.32	28	-	30.5	36	16.5	-	10	0.100
18 5M 25	18	6F	ST	28.65	27.51	32	-	30.5	36	20	-	12	0.120
20 5M 25	20	6F	ST	31.83	30.69	36	-	30.5	36	23	-	14	0.160
21 5M 25	21	6F	ST	33.42	32.28	38	-	30.5	38.5	24	-	14	0.190
22 5M 25	22	6F	ST	35.01	33.87	39	-	30.5	38.5	25.5	-	14	0.210
24 5M 25	24	6F	ST	38.20	37.06	42	-	30.5	38.5	27	-	16	0.250
26 5M 25	26	6F	ST	41.38	40.24	44	-	30.5	38.5	30	-	18	0.300
28 5M 25	28	6F	ST	44.56	43.42	48	-	30.5	38.5	30.5	-	18	0.350
30 5M 25	30	6F	ST	47.75	46.61	51	-	30.5	38.5	35	-	20	0.420
32 5M 25	32	6F	ST	50.93	49.79	54	-	30.5	38.5	38	8	22	0.480
36 5M 25	36	6F	ST	57.30	56.16	60	-	30.5	38.5	38	8	22	0.590
40 5M 25	40	6F	ST	63.66	62.52	71	-	30.5	38.5	38	8	22	0.740
44 5M 25	44	6W	AL	70.03	68.89	-	54	30.5	40	38	8	22	0.320
48 5M 25	48	6W	AL	76.39	75.25	-	61	30.5	40	45	8	25	0.275
60 5M 25	60	6W	AL	95.49	94.35	-	80	30.5	40	45	8	25	0.435
72 5M 25	72	6W	AL	114.59	113.45	-	100	30.5	40	45	8	25	0.525

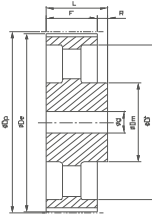
AL = Aluminium ST = Steel GG = Cast iron **We reserve the right to make technical changes.** * Non stock items.



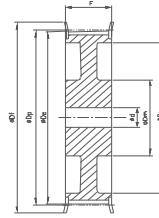
Ausf. 6F



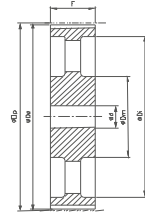
Ausf. 6WF



Ausf. 6A



Ausf. 10WF



Ausf. 10A

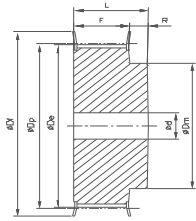
Description	Number of teeth	Type	Material	D _p (mm)	D _e (mm)	D _f (mm)	F (mm)	L (mm)	D _m (mm)	D _i (mm)	Pilot bore d (mm)	Finished bore hole d _{max} (mm)	Weight (≈kg)
8M - Pitch 8 mm for belt width 20 mm													
22 8M 20	22	6F	ST	56.02	54.65	60	28	38	43	-	12	30	0.540
24 8M 20	24	6F	ST	61.12	59.75	66	28	38	45	-	12	30	0.650
26 8M 20	26	6F	ST	66.21	64.84	70	28	38	48	-	12	35	0.800
28 8M 20	28	6F	ST	71.30	70.08	75	28	38	50	-	15	35	0.870
30 8M 20	30	6F	ST	76.39	75.13	83	28	38	55	-	15	35	1.000
32 8M 20	32	6F	ST	81.49	80.16	87	28	38	60	-	15	40	1.200
34 8M 20	34	6F	ST	86.58	85.22	91	28	38	70	-	15	45	1.400
36 8M 20	36	6F	ST	91.67	90.30	97	28	38	75	-	15	45	1.550
38 8M 20	38	6F	ST	96.77	95.39	102	28	38	75	-	15	45	1.650
40 8M 20	40	6F	ST	101.86	100.49	106	28	38	75	-	15	45	1.800
44 8M 20	44	6F	ST	112.05	110.67	120	28	38	75	-	15	45	2.100
48 8M 20	48	6F	ST	122.23	120.86	127	28	38	75	-	15	45	2.440
56 8M 20	56	6WF	ST	142.60	141.23	150	28	38	80	116	15	45	2.600
64 8M 20	64	6WF	ST	162.97	161.60	168	28	38	80	137	15	45	2.900
72 8M 20	72	6WF	ST	183.35	181.97	192	28	38	80	158	15	45	3.100
80 8M 20	80	6W	GG	203.72	202.35	-	28	38	90	180	15	50	3.800
90 8M 20	90	6A	GG	229.18	227.81	-	28	38	90	204	15	50	4.200
112 8M 20	112	6A	GG	285.21	283.83	-	28	38	90	254	18	50	5.200
144 8M 20	144	6A	GG	366.69	365.32	-	28	38	90	336	20	50	7.500
168 8M 20	168	6A	GG	427.81	426.44	-	28	38	100	400	20	55	10.000
192 8M 20	192	6A	GG	488.92	487.55	-	28	38	100	460	20	55	14.400
8M - Pitch 8 mm for belt width 30 mm													
22 8M 30	22	6F	ST	56.02	54.65	60	38	48	43	-	12	30	0.690
24 8M 30	24	6F	ST	61.12	59.75	66	38	48	45	-	12	30	0.840
26 8M 30	26	6F	ST	66.21	64.84	70	38	48	48	-	12	35	1.000
28 8M 30	28	6F	ST	71.30	70.08	75	38	48	50	-	15	35	1.120
30 8M 30	30	6F	ST	76.39	75.13	83	38	48	55	-	15	35	1.320
32 8M 30	32	6F	ST	81.49	80.16	87	38	48	60	-	15	40	1.500
34 8M 30	34	6F	ST	86.58	85.22	91	38	48	70	-	15	45	1.800
36 8M 30	36	6F	ST	91.67	90.30	97	38	48	75	-	15	45	1.990
38 8M 30	38	6F	ST	96.77	95.39	102	38	48	75	-	15	45	2.270
40 8M 30	40	6F	ST	101.86	100.49	106	38	48	75	-	15	45	2.400
44 8M 30	44	6F	ST	112.05	110.67	120	38	48	75	-	15	45	2.800
48 8M 30	48	6F	ST	122.23	120.86	128	38	48	75	-	15	45	3.200
56 8M 30	56	6WF	ST	142.60	141.23	150	38	48	90	116	15	50	3.600
64 8M 30	64	6WF	ST	162.97	161.60	168	38	48	90	137	15	50	4.300
72 8M 30	72	6WF	ST	183.35	181.97	192	38	48	95	158	15	50	4.800
80 8M 30	80	6W	GG	203.72	202.35	-	38	48	100	180	15	55	5.100
90 8M 30	90	6A	GG	229.18	227.81	-	38	48	100	204	15	55	5.700
112 8M 30	112	6A	GG	285.21	283.83	-	38	48	100	254	18	55	6.800
144 8M 30	144	6A	GG	366.69	365.32	-	38	48	100	336	20	55	9.300
168 8M 30	168	6A	GG	427.81	426.44	-	38	48	100	400	20	55	11.400
192 8M 30	192	6A	GG	488.92	487.55	-	38	48	100	460	20	55	16.000



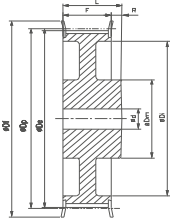
optibelt ZRS HTD Pulleys for Plain Boring Profile 8M

Description	Number of teeth	Type	Material	D _p (mm)	D _e (mm)	D _i (mm)	F (mm)	L (mm)	D _m (mm)	D _i (mm)	Pilot bore d (mm)	Finished bore hole d _{max} (mm)	Weight (=kg)
8M - Pitch 8 mm for belt width 50 mm													
22 8M 50	22	6F	ST	56.02	54.65	60	60	70	43	-	12	30	1.000
24 8M 50	24	6F	ST	61.12	59.75	66	60	70	45	-	12	30	1.200
26 8M 50	26	6F	ST	66.21	64.84	70	60	70	48	-	15	35	1.500
28 8M 50	28	6F	ST	71.30	70.08	75	60	70	50	-	15	35	1.670
30 8M 50	30	6F	ST	76.39	75.13	83	60	70	55	-	15	35	1.970
32 8M 50	32	6F	ST	81.49	80.16	87	60	70	60	-	15	40	2.270
34 8M 50	34	6F	ST	86.58	85.22	91	60	70	70	-	15	45	2.690
36 8M 50	36	6F	ST	91.67	90.30	97	60	70	75	-	15	45	2.970
38 8M 50	38	6F	ST	96.77	95.39	102	60	70	75	-	15	45	3.230
40 8M 50	40	6F	ST	101.86	100.49	106	60	70	75	-	18	45	3.500
44 8M 50	44	6F	ST	112.05	110.67	120	60	70	75	-	18	45	3.900
48 8M 50	48	6F	ST	122.23	120.86	128	60	70	75	-	18	45	4.300
56 8M 50	56	10WF	ST	142.60	141.23	150	60	60	80	116	18	50	5.000
64 8M 50	64	10WF	ST	162.97	161.60	168	60	60	80	137	18	55	5.600
72 8M 50	72	10WF	ST	183.35	181.97	192	60	60	80	158	18	55	6.800
80 8M 50	80	10W	GG	203.72	202.35	-	60	60	110	180	18	60	6.900
90 8M 50	90	10A	GG	229.18	227.81	-	60	60	110	204	18	60	8.600
112 8M 50	112	10A	GG	285.21	283.83	-	60	60	110	254	18	60	9.600
144 8M 50	144	10A	GG	366.69	365.32	-	60	60	110	336	20	60	13.800
168 8M 50	168	10A	GG	427.81	426.44	-	60	60	120	400	20	65	16.000
192 8M 50	192	10A	GG	488.92	487.55	-	60	60	130	460	20	70	22.400
8M - Pitch 8 mm for belt width 85 mm													
22 8M 85	22	6F	ST	56.02	54.65	60	95	105	43	-	12	30	1.550
24 8M 85	24	6F	ST	61.12	59.75	66	95	105	45	-	12	30	1.900
26 8M 85	26	6F	ST	66.21	64.84	70	95	105	50	-	15	35	2.250
28 8M 85	28	6F	ST	71.30	70.08	75	95	105	50	-	15	35	2.550
30 8M 85	30	6F	ST	76.39	75.13	83	95	105	55	-	15	35	3.000
32 8M 85	32	6F	ST	81.49	80.16	87	95	105	60	-	15	40	3.570
34 8M 85	34	6F	ST	86.58	85.22	91	95	105	70	-	15	45	4.000
36 8M 85	36	6F	ST	91.67	90.30	97	95	105	70	-	15	45	4.500
38 8M 85	38	6F	ST	96.77	95.39	102	95	105	75	-	15	45	4.900
40 8M 85	40	6F	ST	101.86	100.49	106	95	105	75	-	18	45	5.200
44 8M 85	44	6F	ST	112.05	110.67	120	95	105	75	-	18	45	6.600
48 8M 85	48	6F	ST	122.23	120.86	128	95	105	80	-	18	45	7.600
56 8M 85	56	6F	ST	142.60	141.23	150	95	105	80	-	18	50	9.800
64 8M 85	64	10WF	ST	162.97	161.60	168	95	95	100	137	20	55	10.400
72 8M 85	72	10WF	ST	183.35	181.97	192	95	95	110	158	20	60	11.400
80 8M 85	80	10W	GG	203.72	202.35	-	95	95	110	180	20	60	11.100
90 8M 85	90	10A	GG	229.18	227.81	-	95	95	110	204	20	60	13.200
112 8M 85	112	10A	GG	285.21	283.83	-	95	95	110	254	24	60	16.300
144 8M 85*	144	10A	GG	366.69	365.32	-	95	95	120	336	24	65	21.500
168 8M 85*	168	10A	GG	427.81	426.44	-	95	95	120	400	24	65	26.100
192 8M 85*	192	10A	GG	488.92	487.55	-	95	95	130	460	24	70	30.600

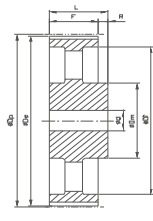
AL = Aluminium ST = Steel GG = Cast iron **We reserve the right to make technical changes.** * Non stock items.



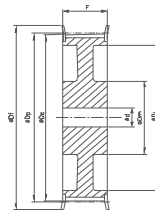
Ausf. 6F



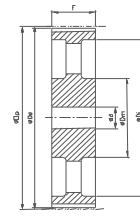
Ausf. 6WF



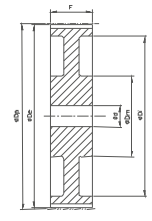
Ausf. 6A



Ausf. 10WF



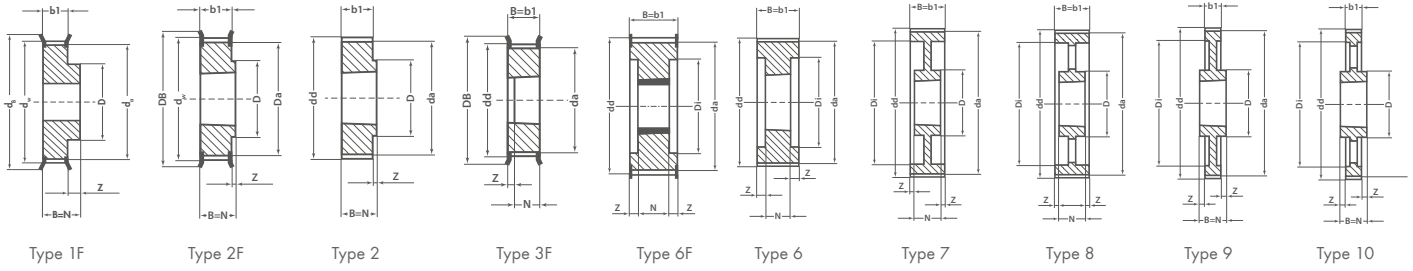
Ausf. 10A



Ausf. 10W

Description	Number of teeth	Type	Material	D _p (mm)	D _e (mm)	D _f (mm)	F (mm)	L (mm)	D _m (mm)	D _i (mm)	Pilot bore d (mm)	Finished bore hole d _{max} (mm)	Weight (≈kg)
14M - Pitch 14 mm for belt width 40 mm													
28 14M 40	28	6F	ST	124.78	122.12	128	54	69	100	-	24	60	4.730
29 14M 40	29	6F	ST	129.23	126.57	138	54	69	100	-	24	60	5.090
30 14M 40	30	6F	ST	133.69	130.99	138	54	69	100	-	24	60	5.450
32 14M 40	32	6F	ST	142.60	139.88	154	54	69	100	-	24	70	6.170
34 14M 40	34	6F	ST	151.52	148.79	160	54	69	100	-	24	70	6.880
36 14M 40	36	6F	ST	160.43	157.68	168	54	69	100	-	24	70	7.600
38 14M 40	38	6F	ST	169.34	166.60	183	54	69	120	-	24	70	8.280
40 14M 40	40	6F	ST	178.25	175.49	188	54	69	120	-	24	70	9.260
44 14M 40	44	6F	ST	196.08	193.28	211	54	69	120	-	24	70	10.320
48 14M 40	48	6WF	GG	213.90	211.11	226	54	69	135	170	24	70	11.500
56 14M 40	56	6WF	GG	249.55	246.76	256	54	69	135	207	28	70	13.050
64 14M 40	64	6WF	GG	285.21	282.41	296	54	69	135	240	28	70	14.400
72 14M 40	72	6A	GG	320.86	318.06	-	54	69	135	280	28	70	16.900
80 14M 40	80	6A	GG	356.51	353.71	-	54	69	135	314	28	70	18.500
90 14M 40	90	6A	GG	401.07	398.28	-	54	69	135	358	28	70	20.000
112 14M 40*	112	6A	GG	499.11	496.32	-	54	69	135	456	28	70	26.700
144 14M 40*	144	6A	GG	641.71	638.92	-	54	69	135	600	28	70	35.000
168 14M 40*	168	6A	GG	748.66	745.87	-	54	69	135	706	28	70	44.200
192 14M 40*	192	6A	GG	855.62	852.82	-	54	69	135	813	28	70	52.200
216 14M 40*	216	6A	GG	962.57	959.76	-	54	69	150	920	28	80	60.000
14M - Pitch 14 mm for belt width 55 mm													
28 14M 55	28	6F	ST	124.78	122.12	128	70	85	100	-	24	60	5.600
29 14M 55	29	6F	ST	129.23	126.57	138	70	85	100	-	24	60	6.100
30 14M 55	30	6F	ST	133.69	130.99	138	70	85	100	-	24	60	6.600
32 14M 55	32	6F	ST	142.60	139.88	154	70	85	100	-	24	70	7.600
34 14M 55	34	6F	ST	151.52	148.79	160	70	85	100	-	24	70	8.600
36 14M 55	36	6F	ST	160.43	157.68	168	70	85	100	-	24	70	9.600
38 14M 55	38	6F	ST	169.34	166.60	183	70	85	120	-	24	70	10.800
40 14M 55	40	6F	ST	178.25	175.49	188	70	85	120	-	24	70	11.200
44 14M 55	44	6F	ST	196.08	193.28	211	70	85	120	-	24	70	12.500
48 14M 55	48	10WF	GG	213.90	211.11	226	70	70	135	170	24	70	13.700
56 14M 55	56	10WF	GG	249.55	246.76	256	70	70	135	207	28	70	14.500
64 14M 55	64	10WF	GG	285.21	282.41	296	70	70	135	240	28	70	15.600
72 14M 55	72	10A	GG	320.86	318.06	-	70	70	135	280	28	70	18.500
80 14M 55	80	10A	GG	356.51	353.71	-	70	70	135	314	28	70	20.000
90 14M 55	90	10A	GG	401.07	398.28	-	70	70	135	358	28	70	22.600
112 14M 55*	112	10A	GG	499.11	496.32	-	70	70	135	456	28	70	29.500
144 14M 55*	144	10A	GG	641.71	638.92	-	70	70	135	600	28	70	39.000
168 14M 55*	168	10A	GG	748.66	745.87	-	70	70	135	706	28	70	48.500
192 14M 55*	192	10A	GG	855.62	852.82	-	70	70	135	813	28	70	57.800
216 14M 55*	216	10A	GG	962.57	959.76	-	70	70	150	920	28	80	67.000
14M - Pitch 14 mm for belt width 85 mm													
28 14M 85	28	6F	ST	124.78	122.12	128	102	202	100	-	24	60	7.700

Description	Number of teeth	Type	Material	D _p (mm)	D _e (mm)	D _i (mm)	F (mm)	L (mm)	D _m (mm)	D _i (mm)	Pilot bore d (mm)	Finished bore hole d _{max} (mm)	Weight (≈kg)
29 14M 85	29	6F	ST	129.23	126.57	138	102	117	100	-	24	60	8.400
30 14M 85	30	6F	ST	133.69	130.99	138	102	117	100	-	24	60	9.100
32 14M 85	32	6F	ST	142.60	139.88	154	102	117	100	-	24	60	10.500
34 14M 85	34	6F	ST	151.52	148.79	160	102	117	100	-	24	70	11.900
36 14M 85	36	6F	ST	160.43	157.68	168	102	117	100	-	32	70	13.200
38 14M 85	38	6F	ST	169.34	166.60	183	102	117	120	-	32	70	15.150
40 14M 85	40	6F	ST	178.25	175.49	188	102	117	135	-	32	70	17.100
44 14M 85	44	6F	ST	196.08	193.28	211	102	117	135	-	32	70	23.300
48 14M 85	48	6F	ST	213.90	211.11	226	102	117	150	-	32	80	25.000
56 14M 85	56	10WF	GG	249.55	246.76	256	102	102	150	207	32	80	25.000
64 14M 85	64	10WF	GG	285.21	282.41	296	102	102	150	242	32	80	28.200
72 14M 85	72	10A	GG	320.86	318.06	-	102	102	150	278	32	80	28.800
80 14M 85	80	10A	GG	356.51	353.71	-	102	102	150	314	32	80	30.100
90 14M 85	90	10A	GG	401.07	398.28	-	102	102	150	358	32	80	33.000
112 14M 85*	112	10A	GG	499.11	496.32	-	102	102	150	456	32	80	41.800
144 14M 85*	144	10A	GG	641.71	638.92	-	102	102	150	600	32	80	52.400
168 14M 85*	168	10A	GG	748.66	745.87	-	102	102	150	706	32	80	60.300
192 14M 85*	192	10A	GG	855.62	852.82	-	102	102	165	813	32	90	70.200
216 14M 85*	216	10A	GG	962.57	959.76	-	102	102	160	920	32	90	81.000
14M - Pitch 14 mm for belt width 115 mm													
28 14M 115	28	6F	ST	124.78	122.12	128	133	148	100	-	32	60	9.200
29 14M 115	29	6F	ST	129.23	126.57	138	133	148	100	-	32	60	10.200
30 14M 115	30	6F	ST	133.69	130.99	138	133	148	100	-	32	60	11.200
32 14M 115	32	6F	ST	142.60	139.88	154	133	148	100	-	32	60	13.200
34 14M 115	34	6F	ST	151.52	148.79	160	133	148	100	-	32	70	14.800
36 14M 115	36	6F	ST	160.43	157.68	168	133	148	120	-	32	70	16.600
38 14M 115	38	6F	ST	169.34	166.60	183	133	148	120	-	32	70	19.200
40 14M 115	40	6F	ST	178.25	175.49	188	133	148	135	-	32	70	22.100
44 14M 115	44	6F	ST	196.08	193.28	211	133	148	140	-	32	80	28.000
48 14M 115	48	6F	ST	213.90	211.11	226	133	148	150	-	32	80	35.000
56 14M 115	56	6F	ST	249.55	246.76	256	133	148	150	-	32	80	44.200
64 14M 115	64	10WF	GG	285.21	282.41	296	133	133	150	240	32	80	36.800
72 14M 115	72	10A	GG	320.86	318.06	-	133	133	150	278	32	80	36.100
80 14M 115	80	10A	GG	356.51	353.71	-	133	133	150	314	32	80	38.600
90 14M 115	90	10A	GG	401.07	398.28	-	133	133	150	358	32	80	41.000
112 14M 115*	112	10A	GG	499.11	496.32	-	133	133	150	456	32	80	54.400
144 14M 115*	144	10A	GG	641.71	638.92	-	133	133	165	600	32	90	67.800
168 14M 115*	168	10A	GG	748.66	745.87	-	133	133	165	706	32	90	75.800
192 14M 115*	192	10A	GG	855.62	852.82	-	133	133	165	813	32	90	88.300
216 14M 115*	216	10A	GG	962.57	959.76	-	133	133	165	920	32	90	98.000
14M - Pitch 14 mm for belt width 170 mm													
28 14M 170*	28	6F	ST	124.78	122.12	128	187	202	100	-	32	60	13.800
29 14M 170*	29	6F	ST	129.23	126.57	138	187	202	100	-	32	60	14.200
30 14M 170*	30	6F	ST	133.69	130.99	138	187	202	100	-	32	60	15.600
32 14M 170*	32	6F	ST	142.60	139.88	154	187	202	100	-	32	60	18.100
34 14M 170*	34	6F	ST	151.52	148.79	160	187	202	100	-	32	60	20.400
36 14M 170*	36	6F	ST	160.43	157.68	168	187	202	100	-	32	70	23.500
38 14M 170*	38	6F	ST	169.34	166.60	183	187	202	120	-	32	70	26.500
40 14M 170*	40	6F	ST	178.25	175.49	188	187	202	135	-	32	85	30.100
44 14M 170*	44	6F	ST	196.08	193.28	211	187	202	140	-	32	85	37.800
48 14M 170*	48	6F	ST	213.90	211.11	226	187	202	150	-	32	85	44.500



Description	Number of teeth	Type	Material	d _a (mm)	d _e (mm)	D _B (mm)	b ₁ (mm)	B (mm)	N (mm)	D (mm)	D ₁ (mm)	Z (mm)	Finished bore d _{max} (mm)	Taper bushing	Weight without bushing (≈kg)	
8MDC																
8MDC 12 TB 25	25	2F	ST	63.66	62.06	70.0	20.0	22.0	22.0	49	-	-	28	1108	0.300	
8MDC 12 TB 28	28	2F	ST	71.30	69.70	79.0	20.0	22.0	22.0	59	-	-	28	1108	0.400	
8MDC 12 TB 30	30	2F	ST	76.39	74.79	86.0	20.0	25.0	25.0	66	-	-	32	1210	0.400	
8MDC 12 TB 32	32	2F	ST	81.49	79.89	90.0	20.0	25.0	25.0	66	-	-	42	1610	0.400	
8MDC 12 TB 34	34	2F	ST	86.58	84.98	95.0	20.0	25.0	25.0	70	-	-	42	1610	0.500	
8MDC 12 TB 36	36	2F	ST	91.67	90.07	98.0	20.0	25.0	25.0	78	-	-	42	1610	0.600	
8MDC 12 TB 38	38	2F	ST	96.77	95.17	106.0	20.0	25.0	25.0	80	-	-	42	1610	0.700	
8MDC 12 TB 40	40	2F	ST	101.86	100.26	111.0	20.0	25.0	25.0	85	-	-	42	1610	0.900	
8MDC 12 TB 45	45	2F	ST	114.59	112.99	119.0	20.0	32.0	32.0	92	-	-	50	2012	1.100	
8MDC 12 TB 48	48	2F	ST	122.23	120.63	135.0	20.0	32.0	32.0	104	-	-	50	2012	1.500	
8MDC 12 TB 50	50	2F	ST	127.32	125.72	135.0	20.0	32.0	32.0	104	-	-	50	2012	1.600	
8MDC 12 TB 56	56	2F	ST	142.60	141.00	151.0	20.0	32.0	32.0	104	-	-	50	2012	2.100	
8MDC 12 TB 60	60	2F	ST	152.79	151.19	159.0	20.0	32.0	32.0	111	-	-	50	2012	2.400	
8MDC 12 TB 64	64	2F	ST	162.97	161.37	168.0	20.0	32.0	32.0	111	-	-	50	2012	2.700	
8MDC 12 TB 75	75	2	GG	190.99	189.39	-	20.0	32.0	32.0	111	-	-	50	2012	4.600	
8MDC 12 TB 80	80	2	GG	203.72	202.12	-	20.0	32.0	32.0	111	-	-	50	2012	5.100	
8MDC 12 TB 90	90	2	GG	229.18	227.58	-	20.0	-	-	111	-	-	50	2012	6.400	
8MDC 21 TB 25	25	3F	ST	63.66	62.06	70.0	30.0	30.0	22.0	-	-	8.0	28	1108	0.400	
8MDC 21 TB 28	28	3F	ST	71.30	69.70	79.0	30.0	30.0	25.0	-	-	5.0	32	1210	0.400	
8MDC 21 TB 30	30	3F	ST	76.39	74.79	86.0	30.0	30.0	25.0	-	-	5.0	32	1210	0.600	
8MDC 21 TB 32	32	3F	ST	81.49	79.89	90.0	30.0	30.0	25.0	-	-	5.0	42	1610	0.500	
8MDC 21 TB 34	34	3F	ST	86.58	84.98	91.0	30.0	30.0	25.0	-	-	5.0	42	1610	0.600	
8MDC 21 TB 36	36	3F	ST	91.67	90.07	98.0	30.0	30.0	25.0	-	-	5.0	42	1610	0.700	
8MDC 21 TB 38	38	3F	ST	96.77	95.17	106.0	30.0	30.0	25.0	-	-	5.0	42	1610	1.000	
8MDC 21 TB 40	40	3F	ST	101.86	100.26	111.0	30.0	30.0	25.0	-	-	5.0	42	1610	1.100	
8MDC 21 TB 45	45	2F	ST	114.59	112.99	119.0	30.0	32.0	32.0	92	-	-	50	2012	1.300	
8MDC 21 TB 48	48	2F	ST	122.23	120.63	135.0	30.0	32.0	32.0	104	-	-	50	2012	1.600	
8MDC 21 TB 50	50	2F	ST	127.32	125.72	135.0	30.0	32.0	32.0	104	-	-	50	2012	1.900	
8MDC 21 TB 56	56	2F	ST	142.60	141.00	151.0	30.0	32.0	32.0	111	-	-	50	2012	2.400	
8MDC 21 TB 60	60	2F	ST	152.79	151.19	159.0	30.0	45.0	45.0	124	-	-	60	2517	3.200	
8MDC 21 TB 64	64	2F	ST	162.97	161.37	168.0	30.0	45.0	45.0	124	-	-	60	2517	3.800	
8MDC 21 TB 75	75	2	GG	190.99	189.39	-	30.0	45.0	45.0	124	-	-	60	2517	6.800	
8MDC 21 TB 80	80	2	GG	203.72	202.12	-	30.0	45.0	45.0	124	-	-	60	2517	7.600	
8MDC 21 TB 90	90	9	GG	229.18	227.58	-	30.0	45.0	45.0	124	198	7.5	60	2517	8.600	
8MDC 21 TB 112	112	9	GG	285.21	283.61	-	30.0	45.0	45.0	124	253	7.5	60	2517	12.500	
8MDC 21 TB 140	140	10	GG	356.51	354.91	-	30.0	51.0	51.0	150	324	10.5	75	3020	12.800	
8MDC 36 TB 28	28	3F	ST	71.30	69.70	79.0	45.0	45.0	25.0	-	-	20.0	32	1210	0.700	
8MDC 36 TB 30	30	3F	ST	76.39	74.79	86.0	45.0	45.0	25.0	-	-	20.0	42	1610	0.600	
8MDC 36 TB 32	32	3F	ST	81.89	79.89	90.0	45.0	45.0	25.0	-	-	20.0	42	1610	0.800	
8MDC 36 TB 34	34	3F	ST	86.58	84.98	95.0	45.0	45.0	25.0	-	-	20.0	42	1610	1.000	
8MDC 36 TB 36	36	3F	ST	91.67	90.07	98.0	45.0	45.0	25.0	-	-	20.0	42	1610	1.200	
8MDC 36 TB 38	38	3F	ST	96.77	95.17	106.0	45.0	45.0	25.0	-	-	20.0	42	1610	1.400	
8MDC 36 TB 40	40	3F	ST	101.86	100.26	111.0	45.0	45.0	32.0	-	-	13.0	50	2012	1.400	

optibelt ZRS DELTA CHAIN Pulleys for Taper Bushings
Profile 8MDC



Description	Number of teeth	Type	Material	d _d (mm)	d _c (mm)	D _b (mm)	b ₁ (mm)	B (mm)	N (mm)	D (mm)	D _i (mm)	Z (mm)	Finished bore d _{max} (mm)	Taper bushing	Weight without bushing (≈kg)
8MDC 36 TB 45	45	3F	ST	114.59	112.99	120.0	45.0	45.0	32.0	-	-	13.0	50	2012	1.900
8MDC 36 TB 48	48	3F	ST	122.23	120.63	128.0	45.0	45.0	32.0	-	-	13.0	50	2012	2.200
8MDC 36 TB 50	50	3F	ST	127.32	125.72	128.0	45.0	45.0	32.0	-	-	13.0	50	2012	2.700
8MDC 36 TB 56	56	3F	ST	142.60	141.00	150.0	45.0	45.0	45.0	-	-	-	60	2517	3.000
8MDC 36 TB 60	60	3F	ST	152.79	151.19	158.0	45.0	45.0	45.0	-	-	-	60	2517	3.800
8MDC 36 TB 64	64	3F	ST	162.97	161.37	168.0	45.0	45.0	45.0	-	-	-	60	2517	4.500
8MDC 36 TB 75	75	2	GG	190.99	189.39	-	45.0	51.0	51.0	150	-	-	75	3020	8.700
8MDC 36 TB 80	80	2	GG	203.72	202.12	-	45.0	51.0	51.0	150	-	-	75	3020	10.000
8MDC 36 TB 90	90	9	GG	229.18	227.58	-	45.0	51.0	51.0	150	197	3.0	75	3020	10.400
8MDC 36 TB 112	112	9	GG	285.21	283.61	-	45.0	51.0	51.0	150	253	3.0	75	3020	14.000
8MDC 36 TB 140	140	10	GG	356.51	354.91	-	45.0	51.0	51.0	150	324	3.0	75	3020	12.000
8MDC 36 TB 168	168	10	GG	427.81	426.21	-	45.0	65.0	65.0	198	396	10.0	100	3525	23.900
8MDC 36 TB 192	192	10	GG	488.92	487.32	-	45.0	65.0	65.0	198	457	10.0	100	3525	26.600
8MDC 62 TB 40	40	3F	ST	101.86	100.26	106.0	72.0	72.0	32.0	-	-	40.0	50	2012	2.100
8MDC 62 TB 45	45	3F	ST	114.59	112.99	120.0	72.0	72.0	32.0	-	-	40.0	50	2012	3.300
8MDC 62 TB 48	48	3F	ST	122.23	120.63	128.0	72.0	72.0	45.0	-	-	27.0	60	2517	3.900
8MDC 62 TB 50	50	3F	ST	127.32	125.72	135.0	72.0	72.0	45.0	-	-	27.0	60	2517	4.700
8MDC 62 TB 56	56	6F	ST	142.60	141.00	149.0	72.0	45.0	45.0	-	111	13.5	60	2517	5.500
8MDC 62 TB 60	60	6F	ST	152.79	151.19	157.0	72.0	45.0	45.0	-	121	13.5	60	2517	6.400
8MDC 62 TB 64	64	6F	ST	162.97	161.37	168.0	72.0	45.0	45.0	-	131	13.5	60	2517	7.200
8MDC 62 TB 75	75	6	GG	190.99	189.39	-	72.0	72.0	51.0	-	159	10.5	75	3020	10.000
8MDC 62 TB 80	80	6	GG	203.72	202.12	-	72.0	72.0	51.0	-	172	10.5	45	3020	11.500
8MDC 62 TB 90	90	6	GG	229.18	227.58	-	72.0	72.0	51.0	-	197	10.5	75	3020	15.000
8MDC 62 TB 112	112	7	GG	285.21	283.61	-	72.0	72.0	51.0	150	253	10.5	75	3020	15.000
8MDC 62 TB 140	140	7	GG	356.51	354.91	-	72.0	72.0	65.0	198	324	3.5	100	3525	24.800
8MDC 62 TB 168	168	8	GG	427.81	426.21	-	72.0	72.0	65.0	198	396	3.5	100	3525	28.400
8MDC 62 TB 192	192	8	GG	488.92	487.32	-	72.0	72.0	65.0	198	457	3.5	100	3525	32.200

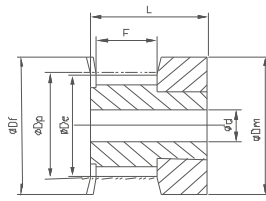
Taper bushing	1008	1108	1210	1610	2012	2517	3020	3525
Bore d ₂ (mm) from... to...	10-25	10-28	11-32	14-42	14-50	16-65	25-75	35-90

GG = Cast iron ST = Steel **We reserve the right to make technical changes.** * Non stock items. Profile 14MDC on request
Bore diameters d₂ see page 4.

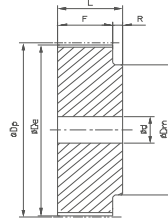
optibelt ZRS DELTA CHAIN Pulleys for Plain Boring
Profile 8MDC

Description	Number of teeth	Type	Material	d _d (mm)	d _c (mm)	D _B (mm)	b ₁ (mm)	B (mm)	N (mm)	D (mm)	Pilot bore d (mm)	Finished bore hole d _{max} (mm)	Weight (≈kg)
8MDC													
8MDC 12 22	22	1F	ST	56.02	54.42	60.0	20.0	30.0	30.0	43	12	28	0.500
8MDC 21 22	22	1F	ST	56.02	54.42	60.0	30.0	40.0	40.0	43	12	28	0.600
8MDC 36 25	25	1F	ST	63.66	62.06	70.0	45.0	55.0	55.0	49	12	32	1.100
8MDC 62 30	30	1F	ST	76.39	74.79	86.0	72.0	84.0	84.0	65	15	42	2.500
8MDC 62 32	32	1F	ST	81.49	79.89	90.0	72.0	84.0	84.0	69	15	50	2.800
8MDC 62 34	34	1F	ST	86.58	84.98	95.0	72.0	84.0	84.0	74	15	55	3.000
8MDC 62 36	36	1F	ST	91.67	90.07	98.0	72.0	84.0	84.0	77	15	60	3.400
8MDC 62 38	38	1F	ST	96.77	95.17	106.0	72.0	84.0	84.0	84	15	60	3.800

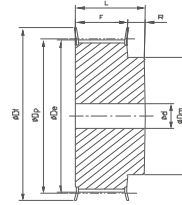
GG = Cast iron ST = Steel **We reserve the right to make technical changes.** * Non stock items. Profile 14MDC on request



Ausf. 1F



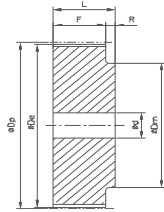
Ausf. 6



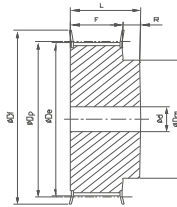
Ausf. 6F

Description	Number of teeth	Type	Material	D_p (mm)	D_e (mm)	D_f (mm)	F (mm)	L (mm)	D_m (mm)	Pilot bore d (mm)	Finished bore hole d_{max} (mm)	Weight (\approx kg)
T2.5 - Pitch 2.5 mm for belt width 4 and 6 mm												
16 T2.5 / 12-2	12	1F	AL	9.55	9.00	13	9	16	13	-	3	0.003
16 T2.5 / 14-2	14	1F	AL	11.14	10.60	15	9	16	15	-	4	0.004
16 T2.5 / 15-2	15	1F	AL	11.94	11.40	15	9	16	15	-	4	0.005
16 T2.5 / 16-2	16	1F	AL	12.73	12.20	16	9	16	16	-	5	0.005
16 T2.5 / 18-2	18	6F	AL	14.32	13.80	17.5	10	16	10	-	6	0.006
16 T2.5 / 19-2	19	6F	AL	15.12	14.60	20	10	16	10	-	6	0.007
16 T2.5 / 20-2	20	6F	AL	15.92	15.40	20	10	16	10	-	6	0.008
16 T2.5 / 22-2	22	6F	AL	17.51	17.00	22	10	16	10	-	6	0.009
16 T2.5 / 24-2	24	6F	AL	19.10	18.50	22	10	16	11	-	6	0.012
16 T2.5 / 25-2	25	6F	AL	19.90	19.35	25	10	16	12	-	8	0.013
16 T2.5 / 26-2	26	6F	AL	20.70	20.15	26	10	16	13	-	8	0.014
16 T2.5 / 28-2	28	6F	AL	22.28	21.75	26	10	16	14	-	8	0.016
16 T2.5 / 30-2	30	6F	AL	23.87	23.35	28	10	16	14	-	10	0.018
16 T2.5 / 32-2	32	6F	AL	25.47	24.95	32	10	16	16	-	10	0.020
16 T2.5 / 36-2	36	6F	AL	28.65	28.10	36	10	16	16	-	12	0.026
16 T2.5 / 40-2	40	6F	AL	31.83	31.30	38	10	16	20	-	12	0.032
16 T2.5 / 44-2	44	6F	AL	35.02	34.50	42	10	16	24	-	14	0.040
16 T2.5 / 48-0	48	6	AL	38.20	37.70	-	10	16	26	-	15	0.048
16 T2.5 / 60-0	60	6	AL	47.75	47.25	-	10	16	34	8	18	0.073

 AL = Aluminium **We reserve the right to make technical changes.**

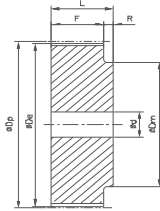


Ausf. 6

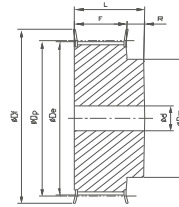


Ausf. 6F

Description	Number of teeth	Type	Material	D _p (mm)	D _e (mm)	D _f (mm)	F (mm)	L (mm)	D _m (mm)	Pilot bore d (mm)	Finished bore hole d _{max} (mm)	Weight (=kg)
T5 - Pitch 5 mm for belt width 10 mm												
21 T5 / 10-2	10	6F	AL	15.92	15.05	19.5	15	21	8	-	5	0.012
21 T5 / 12-2	12	6F	AL	19.10	18.25	23	15	21	11	-	6	0.016
21 T5 / 14-2	14	6F	AL	22.29	21.45	25	15	21	13	-	8	0.019
21 T5 / 15-2	15	6F	AL	23.88	23.05	28	15	21	16	-	10	0.021
21 T5 / 16-2	16	6F	AL	25.47	24.60	32	15	21	18	-	11	0.025
21 T5 / 18-2	18	6F	AL	28.65	27.80	32	15	21	20	-	12	0.031
21 T5 / 19-2	19	6F	AL	30.25	29.40	36	15	21	20	-	12	0.036
21 T5 / 20-2	20	6F	AL	31.83	31.00	36	15	21	22	-	14	0.038
21 T5 / 22-2	22	6F	AL	35.12	34.25	38	15	21	23	-	15	0.046
21 T5 / 24-2	24	6F	AL	38.21	37.40	42	15	21	24	-	15	0.054
21 T5 / 25-2	25	6F	AL	39.80	39.00	44	15	21	26	-	15	0.058
21 T5 / 26-2	26	6F	AL	41.39	40.60	44	15	21	26	-	16	0.062
21 T5 / 27-2	27	6F	AL	42.98	42.20	48	15	21	30	8	18	0.064
21 T5 / 28-2	28	6F	AL	44.58	43.75	48	15	21	32	8	18	0.071
21 T5 / 30-2	30	6F	AL	47.76	46.95	51	15	21	34	8	18	0.075
21 T5 / 32-2	32	6F	AL	50.94	50.10	54	15	21	38	8	22	0.088
21 T5 / 36-2	36	6F	AL	57.31	56.45	64	15	21	38	8	22	0.114
21 T5 / 40-2	40	6F	AL	63.66	62.85	66.5	15	21	40	8	23	0.138
21 T5 / 42-2	42	6F	AL	66.87	66.00	70	15	21	40	8	24	0.180
21 T5 / 44-0	44	6	AL	70.07	69.20	-	15	21	45	8	26	0.185
21 T5 / 48-0	48	6	AL	76.42	75.55	-	15	21	50	8	28	0.200
21 T5 / 60-0	60	6	AL	95.52	94.65	-	15	21	65	8	35	0.307
T5 - Pitch 5 mm for belt width 16 mm												
27 T5 / 10-2	10	6F	AL	15.92	15.05	19.5	21	27	8	-	5	0.016
27 T5 / 12-2	12	6F	AL	19.01	18.25	23	21	27	11	-	6	0.022
27 T5 / 14-2	14	6F	AL	22.29	21.45	25	21	27	13	-	8	0.026
27 T5 / 15-2	15	6F	AL	23.88	23.05	28	21	27	16	-	10	0.029
27 T5 / 16-2	16	6F	AL	25.47	24.60	32	21	27	18	-	11	0.035
27 T5 / 18-2	18	6F	AL	28.65	27.80	32	21	27	20	-	12	0.043
27 T5 / 19-2	19	6F	AL	30.25	29.40	36	21	27	20	-	12	0.049
27 T5 / 20-2	20	6F	AL	31.83	31.00	36	21	27	22	-	14	0.053
27 T5 / 22-2	22	6F	AL	35.12	34.25	38	21	27	23	-	15	0.054
27 T5 / 24-2	24	6F	AL	38.21	37.40	42	21	27	24	-	15	0.076
27 T5 / 25-2	25	6F	AL	39.80	39.00	44	21	27	26	-	15	0.081
27 T5 / 26-2	26	6F	AL	41.47	40.60	44	21	27	26	-	16	0.085
27 T5 / 27-2	27	6F	AL	42.98	42.20	48	21	27	30	8	18	0.090
27 T5 / 28-2	28	6F	AL	44.62	43.75	48	21	27	32	8	18	0.092
27 T5 / 30-2	30	6F	AL	47.76	46.95	51	21	27	34	8	18	0.105
27 T5 / 32-2	32	6F	AL	50.94	50.10	54	21	27	38	8	22	0.123
27 T5 / 36-2	36	6F	AL	57.31	56.45	64	21	27	38	8	22	0.160
27 T5 / 40-2	40	6F	AL	63.66	62.85	66.5	21	27	40	8	23	0.193
27 T5 / 42-2	42	6F	AL	66.87	66.00	70	21	27	40	8	24	0.205
27 T5 / 44-0	44	6	AL	70.07	69.20	-	21	27	45	8	26	0.228



Ausf. 6



Ausf. 6F

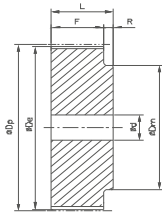
Description	Number of teeth	Type	Material	D _p (mm)	D _e (mm)	D _f (mm)	F (mm)	L (mm)	D _m (mm)	Pilot bore d (mm)	Finished bore hole d _{max} (mm)	Weight (=kg)
T10 - Pitch 10 mm for belt width 16 mm												
31 T10 / 12-2	12	6F	AL	38.20	36.35	42	21	31	28	6	16	0.076
31 T10 / 14-2	14	6F	AL	44.56	42.70	48	21	31	32	8	18	0.104
31 T10 / 15-2	15	6F	AL	47.75	45.90	51	21	31	32	8	18	0.116
31 T10 / 16-2	16	6F	AL	50.93	49.10	54	21	31	35	8	20	0.134
31 T10 / 18-2	18	6F	AL	57.29	55.45	60	21	31	40	8	22	0.167
31 T10 / 19-2	19	6F	AL	60.48	58.60	66.5	21	31	44	8	22	0.184
31 T10 / 20-2	20	6F	AL	63.66	61.80	66.5	21	31	46	8	24	0.208
31 T10 / 22-2	22	6F	AL	70.03	68.20	75	21	31	52	8	28	0.253
31 T10 / 24-2	24	6F	AL	76.39	74.55	83	21	31	58	8	30	0.288
31 T10 / 25-2	25	6F	AL	79.58	77.70	83	21	31	60	8	30	0.310
31 T10 / 26-2	26	6F	AL	82.76	80.90	87	21	31	60	8	30	0.357
31 T10 / 27-2	27	6F	AL	85.95	84.10	91	21	31	60	8	30	0.364
31 T10 / 28-2	28	6F	AL	89.12	87.25	93	21	31	60	8	30	0.401
31 T10 / 30-2	30	6F	AL	95.49	93.65	97	21	31	60	8	30	0.441
31 T10 / 32-2	32	6F	AL	101.86	100.00	106	21	31	65	10	32	0.493
31 T10 / 36-2	36	6F	AL	114.59	112.75	119	21	31	70	10	35	0.623
31 T10 / 40-2	40	6F	AL	127.32	125.45	131	21	31	80	10	40	0.767
31 T10 / 44-0	44	6	AL	140.05	138.20	-	21	31	88	10	46	0.993
31 T10 / 48-0	48	6	AL	152.78	150.95	-	21	31	95	16	48	1.090
31 T10 / 60-0	60	6	AL	190.98	189.10	-	21	31	110	16	60	1.710
T10 - Pitch 10 mm for belt width 25 mm												
40 T10 / 12-2	12	6F	AL	38.20	36.35	42	30	40	28	6	16	0.099
40 T10 / 14-2	14	6F	AL	44.56	42.70	48	30	40	32	8	18	0.134
40 T10 / 15-2	15	6F	AL	47.75	45.90	51	30	40	32	8	18	0.152
40 T10 / 16-2	16	6F	AL	50.93	49.10	54	30	40	35	8	20	0.176
40 T10 / 18-2	18	6F	AL	57.29	55.45	60	30	40	40	8	22	0.224
40 T10 / 19-2	19	6F	AL	60.48	58.65	66.5	30	40	44	8	22	0.247
40 T10 / 20-2	20	6F	AL	63.66	61.80	66.5	30	40	46	8	24	0.276
40 T10 / 22-2	22	6F	AL	70.03	68.20	75	30	40	52	8	28	0.337
40 T10 / 24-2	24	6F	AL	76.39	74.55	83	30	40	58	8	30	0.392
40 T10 / 25-2	25	6F	AL	79.58	77.75	83	30	40	60	8	30	0.422
40 T10 / 26-2	26	6F	AL	82.76	80.90	87	30	40	60	8	30	0.477
40 T10 / 27-2	27	6F	AL	85.95	84.10	91	30	40	60	8	30	0.536
40 T10 / 28-2	28	6F	AL	89.12	87.25	93	30	40	60	8	30	0.540
40 T10 / 30-2	30	6F	AL	95.49	93.65	97	30	40	60	8	30	0.640
40 T10 / 32-2	32	6F	AL	101.86	100.00	106	30	40	65	10	32	0.693
40 T10 / 36-2	36	6F	AL	114.59	112.75	119	30	40	70	10	35	0.873
40 T10 / 40-2	40	6F	AL	127.32	125.45	131	30	40	80	10	40	1.067
40 T10 / 44-0	44	6	AL	140.05	138.20	-	30	40	88	10	46	1.350
40 T10 / 48-0	48	6	AL	152.78	150.95	-	30	40	95	16	48	1.516
40 T10 / 60-0	60	6	AL	190.98	189.10	-	30	40	110	16	60	2.339
T10 - Pitch 10 mm for belt width 32 mm												
47 T10 / 18-2	18	6F	AL	57.29	55.45	60	37	47	40	10	22	0.253



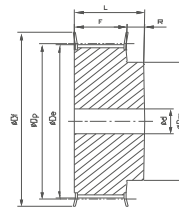
optibelt ZRS Metric Timing Belt Pulleys for Plain Boring Profile T10

Description	Number of teeth	Type	Material	D _p (mm)	D _e (mm)	D _i (mm)	F (mm)	L (mm)	D (mm)	Pilot bore d (mm)	Finished bore hole d _{max} (mm)	Weight (≈kg)
47 T10 / 19-2	19	6F	AL	60.48	58.65	66.5	37	47	44	10	22	0.286
47 T10 / 20-2	20	6F	AL	63.66	61.80	66.5	37	47	46	12	24	0.322
47 T10 / 22-2	22	6F	AL	70.03	68.20	75	37	47	52	12	28	0.393
47 T10 / 24-2	24	6F	AL	76.39	74.55	83	37	47	58	12	30	0.475
47 T10 / 25-2	25	6F	AL	79.58	77.75	83	37	47	60	12	30	0.527
47 T10 / 26-2	26	6F	AL	82.76	80.90	87	37	47	60	12	30	0.564
47 T10 / 27-2	27	6F	AL	85.95	84.10	91	37	47	60	12	30	0.602
47 T10 / 28-2	28	6F	AL	89.12	87.25	93	37	47	60	12	30	0.642
47 T10 / 30-2	30	6F	AL	95.49	93.65	97	37	47	60	12	30	0.740
47 T10 / 32-2	32	6F	AL	101.86	100.00	106	37	47	65	12	32	0.844
47 T10 / 36-2	36	6F	AL	114.59	112.75	119	37	47	70	16	35	1.083
47 T10 / 40-2	40	6F	AL	127.32	125.45	131	37	47	80	16	40	1.317
47 T10 / 44-0	44	6	AL	140.05	138.20	-	37	47	88	16	46	1.611
47 T10 / 48-0	48	6	AL	152.78	150.95	-	37	47	95	16	48	1.931
47 T10 / 60-0	60	6	AL	190.98	189.10	-	37	47	110	16	60	3.004
T10 - Pitch 10 mm for belt width 50 mm												
66 T10 / 18-2	18	6F	AL	57.29	55.45	60	56	66	40	10	22	0.422
66 T10 / 19-2	19	6F	AL	60.48	58.60	66.5	56	66	44	10	22	0.466
66 T10 / 20-2	20	6F	AL	63.66	61.80	66.5	56	66	46	12	24	0.520
66 T10 / 22-2	22	6F	AL	70.03	68.20	75	56	66	52	12	28	0.570
66 T10 / 24-2	24	6F	AL	76.39	74.55	83	56	66	58	12	30	0.736
66 T10 / 25-2	25	6F	AL	79.58	77.75	83	56	66	60	12	30	0.766
66 T10 / 26-2	26	6F	AL	82.76	80.90	87	56	66	60	12	30	0.816
66 T10 / 27-2	27	6F	AL	85.95	84.10	91	56	66	60	12	30	0.946
66 T10 / 28-2	28	6F	AL	89.12	87.25	93	56	66	60	12	30	0.960
66 T10 / 30-2	30	6F	AL	95.49	93.65	97	56	66	60	12	30	1.169
66 T10 / 32-2	32	6F	AL	101.86	100.00	106	56	66	65	12	32	1.300
66 T10 / 36-2	36	6F	AL	114.59	112.75	119	56	66	70	16	35	1.637
66 T10 / 40-2	40	6F	AL	127.32	125.45	131	56	66	80	16	40	1.999
66 T10 / 44-0	44	6	AL	140.05	138.20	-	56	66	88	16	46	2.357
66 T10 / 48-0	48	6	AL	152.78	150.95	-	56	66	95	16	48	2.830
66 T10 / 60-0	60	6	AL	190.98	189.10	-	56	66	110	16	60	4.366

AL = Aluminium We reserve the right to make technical changes.



Ausf. 6



Ausf. 6F

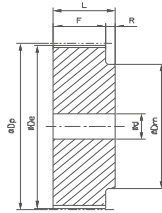
Description	Number of teeth	Type	Material	D _p (mm)	D _e (mm)	D _f (mm)	F (mm)	L (mm)	D _m (mm)	Pilot bore d (mm)	Finished bore hole d _{max} (mm)	Weight (=kg)
AT5 - Pitch 5 mm for belt width 10 mm												
21 AT5 / 12-2	12	6F	AL	19.01	17.85	23	15	21	11	-	6	0.016
21 AT5 / 14-2	14	6F	AL	22.29	21.05	25	15	21	13	-	8	0.019
21 AT5 / 15-2	15	6F	AL	23.88	22.65	28	15	21	16	-	10	0.021
21 AT5 / 16-2	16	6F	AL	25.47	24.20	32	15	21	18	-	11	0.025
21 AT5 / 18-2	18	6F	AL	28.65	27.40	32	15	21	20	-	12	0.031
21 AT5 / 19-2	19	6F	AL	30.25	29.00	36	15	21	22	-	12	0.036
21 AT5 / 20-2	20	6F	AL	31.83	30.60	36	15	21	23	-	14	0.038
21 AT5 / 22-2	22	6F	AL	35.12	33.85	38	15	21	24	-	15	0.046
21 AT5 / 24-2	24	6F	AL	38.21	37.00	42	15	21	26	-	15	0.054
21 AT5 / 25-2	25	6F	AL	39.80	38.60	44	15	21	26	-	15	0.058
21 AT5 / 26-2	26	6F	AL	41.47	40.20	44	15	21	26	-	16	0.062
21 AT5 / 27-2	27	6F	AL	42.98	41.80	48	15	21	30	8	18	0.064
21 AT5 / 28-2	28	6F	AL	44.62	43.35	48	15	21	32	8	18	0.071
21 AT5 / 30-2	30	6F	AL	47.76	46.55	51	15	21	34	8	18	0.075
21 AT5 / 32-2	32	6F	AL	50.94	49.70	54	15	21	36	8	22	0.088
21 AT5 / 36-2	36	6F	AL	57.31	56.05	64	15	21	38	8	22	0.114
21 AT5 / 40-2	40	6F	AL	63.66	62.45	66.5	15	21	40	8	23	0.138
21 AT5 / 42-2	42	6F	AL	66.87	65.60	70	15	21	40	8	24	0.180
21 AT5 / 44-0	44	6	AL	70.07	68.80	-	15	21	45	8	26	0.185
21 AT5 / 48-0	48	6	AL	76.42	75.15	-	15	21	50	8	28	0.200
21 AT5 / 60-0	60	6	AL	95.52	94.25	-	15	21	65	8	35	0.307
AT5 - Pitch 5 mm for belt width 16 mm												
27 AT5 / 12-2	12	6F	AL	19.01	17.85	23	21	27	11	-	6	0.022
27 AT5 / 14-2	14	6F	AL	22.29	21.05	25	21	27	13	-	8	0.026
27 AT5 / 15-2	15	6F	AL	23.88	22.65	28	21	27	16	-	10	0.029
27 AT5 / 16-2	16	6F	AL	25.47	24.20	32	21	27	18	-	11	0.035
27 AT5 / 18-2	18	6F	AL	28.65	27.40	32	21	27	20	-	12	0.043
27 AT5 / 19-2	19	6F	AL	30.25	29.00	36	21	27	22	-	12	0.049
27 AT5 / 20-2	20	6F	AL	31.83	30.60	36	21	27	23	-	14	0.053
27 AT5 / 22-2	22	6F	AL	35.12	33.85	38	21	27	24	-	15	0.054
27 AT5 / 24-2	24	6F	AL	38.21	37.00	42	21	27	26	-	15	0.076
27 AT5 / 25-2	25	6F	AL	39.80	38.60	44	21	27	26	-	15	0.081
27 AT5 / 26-2	26	6F	AL	41.47	40.20	44	21	27	26	-	16	0.085
27 AT5 / 27-2	27	6F	AL	42.98	41.80	48	21	27	30	8	18	0.090
27 AT5 / 28-2	28	6F	AL	44.62	43.35	48	21	27	32	8	18	0.092
27 AT5 / 30-2	30	6F	AL	47.76	46.55	51	21	27	34	8	18	0.105
27 AT5 / 32-2	32	6F	AL	50.94	49.70	54	21	27	36	8	22	0.123
27 AT5 / 36-2	36	6F	AL	57.31	56.05	64	21	27	38	8	22	0.160
27 AT5 / 40-2	40	6F	AL	63.66	62.45	66.5	21	27	40	8	23	0.193
27 AT5 / 42-2	42	6F	AL	66.87	65.60	70	21	27	40	8	24	0.205
27 AT5 / 44-0	44	6	AL	70.07	68.80	-	21	27	45	8	26	0.228
27 AT5 / 48-0	48	6	AL	76.42	75.15	-	21	27	50	8	28	0.280
27 AT5 / 60-0	60	6	AL	95.52	94.25	-	21	27	65	8	35	0.430



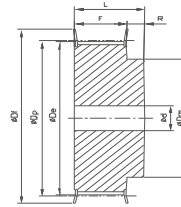
optibelt ZRS Metric Timing Belt Pulleys for Plain Boring Profile AT5

Description	Number of teeth	Type	Material	D _p (mm)	D _e (mm)	D _i (mm)	F (mm)	L (mm)	D _m (mm)	Pilot bore d (mm)	Finished bore hole d _{max} (mm)	Weight (≈kg)
AT5 - Pitch 5 mm for belt width 25 mm												
36 AT5 / 12-2	12	6F	AL	19.01	17.85	23	30	36	11	-	6	0.031
36 AT5 / 14-2	14	6F	AL	22.29	21.05	25	30	36	13	-	8	0.037
36 AT5 / 15-2	15	6F	AL	23.88	22.65	28	30	36	16	-	10	0.041
36 AT5 / 16-2	16	6F	AL	25.47	24.20	32	30	36	18	-	11	0.050
36 AT5 / 18-2	18	6F	AL	28.65	27.40	32	30	36	20	-	12	0.061
36 AT5 / 19-2	19	6F	AL	30.25	29.00	36	30	36	22	-	12	0.070
36 AT5 / 20-2	20	6F	AL	31.83	30.60	36	30	36	23	-	14	0.076
36 AT5 / 22-2	22	6F	AL	35.12	33.85	38	30	36	24	-	15	0.080
36 AT5 / 24-2	24	6F	AL	38.21	37.00	42	30	36	26	-	15	0.109
36 AT5 / 25-2	25	6F	AL	39.80	38.60	44	30	36	26	-	15	0.116
36 AT5 / 26-2	26	6F	AL	41.47	40.20	44	30	36	26	-	16	0.120
36 AT5 / 27-2	27	6F	AL	42.98	41.80	48	30	36	30	8	18	0.128
36 AT5 / 28-2	28	6F	AL	44.62	43.35	48	30	36	32	8	18	0.135
36 AT5 / 30-2	30	6F	AL	47.76	46.55	51	30	36	34	8	18	0.150
36 AT5 / 32-2	32	6F	AL	50.94	49.70	54	30	36	36	8	22	0.176
36 AT5 / 36-2	36	6F	AL	57.31	56.05	64	30	36	38	8	22	0.230
36 AT5 / 40-2	40	6F	AL	63.66	62.45	66.5	30	36	40	8	23	0.276
36 AT5 / 42-2	42	6F	AL	66.87	65.60	70	30	36	40	8	24	0.284
36 AT5 / 44-0	44	6	AL	70.07	68.80	-	30	36	45	8	26	0.315
36 AT5 / 48-0	48	6	AL	76.42	75.15	-	30	36	50	8	28	0.400
36 AT5 / 60-0	60	6	AL	95.52	94.25	-	30	36	65	8	35	0.614

AL = Aluminium **We reserve the right to make technical changes.**



Ausf. 6

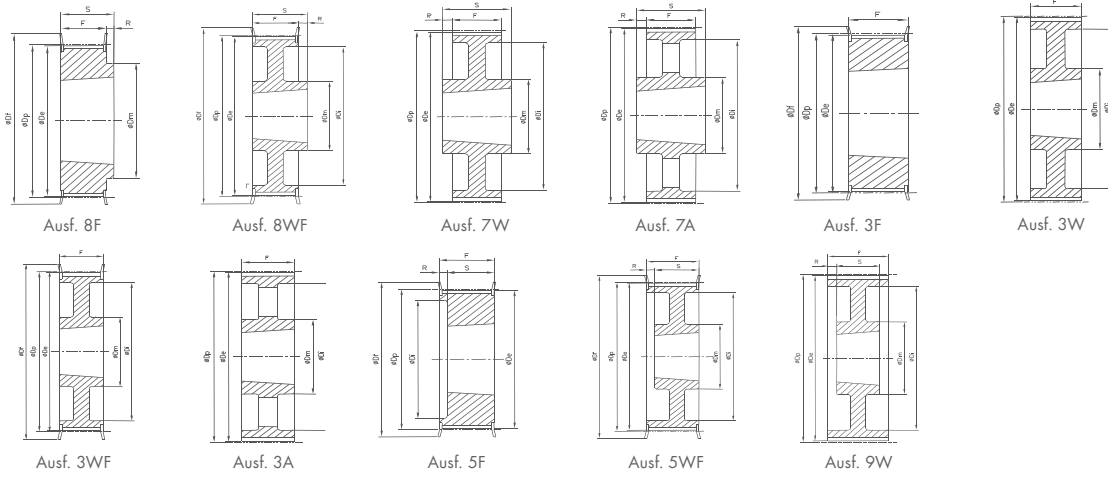


Ausf. 6F

Description	Number of teeth	Type	Material	D _p (mm)	D _e (mm)	D _f (mm)	L (mm)	F (mm)	D _m (mm)	Pilot bore d (mm)	Finished bore hole d _{max} (mm)	Weight (=kg)
AT10 - Pitch 10 mm for belt width 16 mm												
31 AT10 / 15-2	15	6F	AL	47.75	45.90	51	31	21	31	8	18	0.116
31 AT10 / 16-2	16	6F	AL	50.93	49.05	54	31	21	35	8	20	0.134
31 AT10 / 18-2	18	6F	AL	57.29	55.45	60	31	21	40	8	22	0.167
31 AT10 / 19-2	19	6F	AL	60.48	58.60	66.5	31	21	44	8	22	0.184
31 AT10 / 20-2	20	6F	AL	63.66	61.80	66.5	31	21	46	8	24	0.208
31 AT10 / 22-2	22	6F	AL	70.03	68.15	75	31	21	52	8	28	0.253
31 AT10 / 24-2	24	6F	AL	76.39	74.55	83	31	21	58	8	30	0.288
31 AT10 / 25-2	25	6F	AL	79.58	77.70	83	31	21	60	8	30	0.310
31 AT10 / 26-2	26	6F	AL	82.76	80.90	87	31	21	60	8	30	0.357
31 AT10 / 27-2	27	6F	AL	85.95	84.10	91	31	21	60	8	30	0.364
31 AT10 / 28-2	28	6F	AL	89.13	87.25	93	31	21	60	8	30	0.401
31 AT10 / 30-2	30	6F	AL	95.49	93.65	97	31	21	60	8	30	0.441
31 AT10 / 32-2	32	6F	AL	101.86	100.00	106	31	21	65	10	32	0.493
31 AT10 / 36-2	36	6F	AL	114.59	112.75	119	31	21	70	10	35	0.623
31 AT10 / 40-2	40	6F	AL	127.32	125.45	131	31	21	80	10	40	0.767
31 AT10 / 44-0	44	6	AL	140.06	138.20	-	31	21	88	10	46	0.993
31 AT10 / 48-0	48	6	AL	152.78	150.95	-	31	21	95	16	48	1.090
31 AT10 / 60-0	60	6	AL	190.98	189.10	-	31	21	110	16	60	1.710
AT10 - Pitch 10 mm for belt width 25 mm												
40 AT10 / 15-2	15	6F	AL	47.75	45.90	51	40	30	31	8	18	0.152
40 AT10 / 16-2	16	6F	AL	50.93	49.05	54	40	30	35	8	20	0.176
40 AT10 / 18-2	18	6F	AL	57.29	55.45	60	40	30	40	8	22	0.224
40 AT10 / 19-2	19	6F	AL	60.48	58.60	66.5	40	30	44	8	22	0.247
40 AT10 / 20-2	20	6F	AL	63.66	61.80	66.5	40	30	46	8	24	0.276
40 AT10 / 22-2	22	6F	AL	70.03	68.15	75	40	30	52	8	28	0.337
40 AT10 / 24-2	24	6F	AL	76.39	74.55	83	40	30	58	8	30	0.392
40 AT10 / 25-2	25	6F	AL	79.58	77.70	83	40	30	60	8	30	0.422
40 AT10 / 26-2	26	6F	AL	82.76	80.90	87	40	30	60	8	30	0.477
40 AT10 / 27-2	27	6F	AL	85.95	84.10	91	40	30	60	8	30	0.536
40 AT10 / 28-2	28	6F	AL	89.13	87.25	93	40	30	60	8	30	0.540
40 AT10 / 30-2	30	6F	AL	95.49	93.65	97	40	30	60	8	30	0.640
40 AT10 / 32-2	32	6F	AL	101.86	100.00	106	40	30	65	10	32	0.693
40 AT10 / 36-2	36	6F	AL	114.59	112.75	119	40	30	70	10	35	0.873
40 AT10 / 40-2	40	6F	AL	127.32	125.45	131	40	30	80	10	40	1.067
40 AT10 / 44-0	44	6	AL	140.06	138.20	-	40	30	88	10	46	1.350
40 AT10 / 48-0	48	6	AL	152.78	150.95	-	40	30	95	16	48	1.516
40 AT10 / 60-0	60	6	AL	190.98	189.10	-	40	30	110	16	60	2.339
AT10 - Pitch 10 mm for belt width 32 mm												
47 AT10 / 18-2	18	6F	AL	57.29	55.45	60	47	37	40	10	22	0.253
47 AT10 / 19-2	19	6F	AL	60.48	58.60	66.5	47	37	44	10	22	0.286
47 AT10 / 20-2	20	6F	AL	63.66	61.80	66.5	47	37	46	12	24	0.322
47 AT10 / 22-2	22	6F	AL	70.03	68.15	75	47	37	52	12	28	0.393
47 AT10 / 24-2	24	6F	AL	76.39	74.55	83	47	37	58	12	30	0.475

Description	Number of teeth	Type	Material	D _p (mm)	D _e (mm)	D _i (mm)	L (mm)	F (mm)	D _m (mm)	Pilot bore d (mm)	Finished bore hole d _{max} (mm)	Weight (≈kg)
47 AT10 / 25-2	25	6F	AL	79.58	77.70	83	47	37	60	12	30	0.527
47 AT10 / 26-2	26	6F	AL	82.76	80.90	87	47	37	60	12	30	0.564
47 AT10 / 27-2	27	6F	AL	85.95	84.10	91	47	37	60	12	30	0.602
47 AT10 / 28-2	28	6F	AL	89.13	87.25	93	47	37	60	12	30	0.642
47 AT10 / 30-2	30	6F	AL	95.49	93.65	97	47	37	60	12	30	0.740
47 AT10 / 32-2	32	6F	AL	101.86	100.00	106	47	37	65	12	32	0.844
47 AT10 / 36-2	36	6F	AL	114.59	112.75	119	47	37	70	16	35	1.083
47 AT10 / 40-2	40	6F	AL	127.32	125.45	131	47	37	80	16	40	1.317
47 AT10 / 44-0	44	6	AL	140.06	138.20	-	47	37	88	16	46	1.611
47 AT10 / 48-0	48	6	AL	152.78	150.95	-	47	37	95	16	48	1.931
47 AT10 / 60-0	60	6	AL	190.98	189.10	-	47	37	110	16	60	3.004
AT10 - Pitch 10 mm for belt width 50 mm												
66 AT10 / 18-2	18	6F	AL	57.29	55.45	60	66	56	40	10	22	0.422
66 AT10 / 19-2	19	6F	AL	60.48	58.60	66.5	66	56	44	10	22	0.466
66 AT10 / 20-2	20	6F	AL	63.66	61.80	66.5	66	56	46	12	24	0.520
66 AT10 / 22-2	22	6F	AL	70.03	68.15	75	66	56	52	12	28	0.570
66 AT10 / 24-2	24	6F	AL	76.39	74.55	83	66	56	58	12	30	0.736
66 AT10 / 25-2	25	6F	AL	79.58	77.70	83	66	56	60	12	30	0.766
66 AT10 / 26-2	26	6F	AL	82.76	80.90	87	66	56	60	12	30	0.816
66 AT10 / 27-2	27	6F	AL	85.95	84.10	91	66	56	60	12	30	0.946
66 AT10 / 28-2	28	6F	AL	89.13	87.25	93	66	56	60	12	30	0.960
66 AT10 / 30-2	30	6F	AL	95.49	93.65	97	66	56	60	12	30	1.169
66 AT10 / 32-2	32	6F	AL	101.86	100.00	106	66	56	65	12	32	1.300
66 AT10 / 36-2	36	6F	AL	114.59	112.75	119	66	56	70	16	35	1.637
66 AT10 / 40-2	40	6F	AL	127.32	125.45	131	66	56	80	16	40	1.999
66 AT10 / 44-0	44	6	AL	140.06	138.20	-	66	56	88	16	46	2.357
66 AT10 / 48-0	48	6	AL	152.78	150.95	-	66	56	95	16	48	2.830
66 AT10 / 60-0	60	6	AL	190.98	189.10	-	66	56	110	16	60	4.366

AL = Aluminium We reserve the right to make technical changes.



Description	Number of teeth	Type	Material	D _p (mm)	D _e (mm)	D _i (mm)	F (mm)	S (mm)	R (mm)	D _m (mm)	D _i (mm)	Taper bushing	Weight without bushing (≈kg)
L - Pitch 9.525 mm for belt width 050													
TB 18 L 050	18	8F	ST	54.57	53.81	60	19	22	3	40	-	1108	0.200
TB 19 L 050	19	8F	ST	57.61	56.84	64	19	22	3	40	-	1108	0.200
TB 20 L 050	20	8F	ST	60.64	59.88	66.5	19	22	3	40	-	1108	0.200
TB 21 L 050	21	8F	ST	63.67	62.91	70	19	22	3	45	-	1108	0.300
TB 22 L 050	22	8F	ST	66.70	65.94	75	19	22	3	45	-	1108	0.300
TB 23 L 050	23	8F	ST	69.73	68.97	79	19	22	3	55	-	1108	0.400
TB 24 L 050	24	8F	ST	72.77	72.00	79	19	22	3	55	-	1108	0.400
TB 25 L 050	25	8F	ST	75.80	75.04	82.5	19	22	3	58	-	1108	0.500
TB 26 L 050	26	8F	ST	78.83	78.07	86	19	22	3	58	-	1108	0.500
TB 27 L 050	27	8F	ST	81.86	81.10	86	19	22	3	58	-	1108	0.600
TB 28 L 050	28	8F	ST	84.89	84.13	91	19	22	3	58	-	1108	0.600
TB 30 L 050	30	8F	ST	90.96	90.20	97	19	22	3	70	-	1108	0.800
TB 32 L 050	32	8F	ST	97.02	96.26	102	19	22	3	70	-	1108	0.900
TB 36 L 050	36	8F	ST	109.15	108.39	115	19	22	3	70	-	1108	1.200
TB 40 L 050	40	8F	ST	121.28	120.51	128	19	25	6	70	100	1610	1.500
TB 48 L 050	48	8WF	ST	145.53	144.77	150	19	25	6	70	124	1610	2.300
TB 60 L 050	60	7W	GG	181.91	181.15	-	19	25	3	70	160	1610	2.000
TB 72 L 050	72	7A	GG	218.30	217.53	-	19	25	3	75	197	1610	3.000
TB 84 L 050	84	7A	GG	254.68	253.90	-	19	25	3	75	233	1610	4.000
TB 96 L 050	96	7A	GG	291.06	290.30	-	19	32	6.5	75	269	2012	5.500
TB 120 L 050	120	7A	GG	363.83	363.07	-	19	32	6.5	75	342	2012	6.800
L - Pitch 9.525 mm for belt width 075													
TB 18 L 075	18	3F	ST	54.57	53.81	60	25	25	-	-	-	1108	0.200
TB 19 L 075	19	3F	ST	57.61	56.84	64	25	25	-	-	-	1108	0.300
TB 20 L 075	20	3F	ST	60.64	59.88	66.5	25	25	-	-	-	1108	0.300
TB 21 L 075	21	3F	ST	63.67	62.91	70	25	25	-	-	-	1108	0.400
TB 22 L 075	22	3F	ST	66.70	65.94	75	25	25	-	-	-	1108	0.400
TB 23 L 075	23	3F	ST	69.73	68.97	79	25	25	-	-	-	1108	0.400
TB 24 L 075	24	3F	ST	72.77	72.00	79	25	25	-	-	-	1108	0.500
TB 25 L 075	25	3F	ST	75.80	75.04	83	25	25	-	-	-	1108	0.600
TB 26 L 075	26	3F	ST	78.83	78.07	87	25	25	-	-	-	1108	0.600
TB 27 L 075	27	3F	ST	81.86	81.10	87	25	25	-	-	-	1108	0.700
TB 28 L 075	28	3F	ST	84.89	84.13	91	25	25	-	-	-	1108	0.700
TB 30 L 075	30	3F	ST	90.96	90.20	97	25	25	-	-	-	1108	0.900
TB 32 L 075	32	3F	ST	97.02	96.26	102	25	25	3.5	-	-	1108	1.000
TB 36 L 075	36	3F	ST	109.15	108.39	115	25	25	3.5	-	-	1610	1.200
TB 40 L 075	40	3F	ST	121.28	120.51	128	25	25	3.5	-	-	1610	1.700

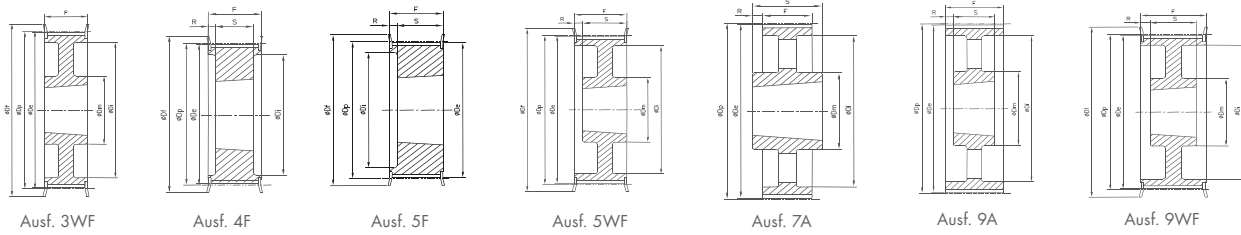


optibelt ZRS Timing Belt Pulleys for Taper Bushings Profile L

Description	Number of teeth	Type	Material	D _p (mm)	D _e (mm)	D _i (mm)	F (mm)	S (mm)	R (mm)	D _m (mm)	D _i (mm)	Taper bushing	Weight without bushing (=kg)
TB 48 L 075	48	3WF	ST	145.53	144.77	150	25	25	-	92	120	1610	2.500
TB 60 L 075	60	3W	ST	181.91	181.15	-	25	25	-	92	166	1610	3.000
TB 72 L 075	72	3A	GG	218.30	217.53	-	25	25	-	92	202	1610	4.000
TB 84 L 075	84	7A	GG	254.68	253.90	-	25	32	3.5	92	236	2012	5.200
TB 96 L 075	96	7A	GG	291.06	290.30	-	25	32	3.5	106	270	2012	6.500
TB 120 L 075	120	7A	GG	363.83	363.07	-	25	32	3.5	106	343	2012	7.600
L - Pitch 9.525 mm for belt width 100													
TB 18 L 100	18	5F	ST	54.57	53.81	60	32	22	9	-	38	1108	0.200
TB 19 L 100	19	5F	ST	57.61	56.84	64	32	22	9	-	38	1108	0.300
TB 20 L 100	20	5F	ST	60.64	59.88	66.5	32	22	9	-	45	1108	0.400
TB 21 L 100	21	5F	ST	63.67	62.91	70	32	22	9	-	45	1108	0.400
TB 22 L 100	22	5F	ST	66.70	65.94	75	32	22	9	-	48	1108	0.400
TB 23 L 100	23	5F	ST	69.73	68.97	79	32	22	10	-	52	1108	0.500
TB 24 L 100	24	5F	ST	72.77	72.00	79	32	22	10	-	52	1108	0.600
TB 25 L 100	25	5F	ST	75.80	75.04	82.5	32	22	10	-	54	1108	0.600
TB 26 L 100	26	5F	ST	78.83	78.07	86	32	22	10	-	60	1108	0.700
TB 27 L 100	27	5F	ST	81.86	81.10	86	32	22	10	-	60	1108	0.800
TB 28 L 100	28	5F	ST	84.89	84.13	91	32	22	10	-	65	1108	0.800
TB 30 L 100	30	5F	ST	90.96	90.20	97	32	25	7	-	71	1210	0.900
TB 32 L 100	32	5F	ST	97.02	96.26	102	32	25	7	-	75	1210	1.000
TB 36 L 100	36	5F	ST	109.15	108.39	115	32	25	7	-	86	1610	1.400
TB 40 L 100	40	5F	ST	121.28	120.51	128	32	25	7	-	96	1610	1.700
TB 48 L 100	48	5WF	ST	145.53	144.77	150	32	25	7	90	120	1610	2.700
TB 60 L 100	60	9W	ST	181.91	181.15	-	32	25	3.5	92	166	1610	2.400
TB 72 L 100	72	3A	GG	218.30	217.53	-	32	32	-	92	202	2012	4.400
TB 84 L 100	84	3A	GG	254.68	253.90	-	32	32	-	92	236	2012	6.000
TB 96 L 100	96	3A	GG	291.06	290.30	-	32	32	-	106	270	2012	7.100
TB 120 L 100	120	3A	GG	363.83	363.07	-	32	32	-	106	343	2012	8.500

Taper bushing	1108	1210	1610	2012
Bore d ₂ (mm) from... to...	10-28	11-32	14-42	14-50

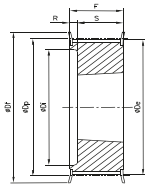
GG = Cast iron ST = Steel We reserve the right to make technical changes. * Non stock items.



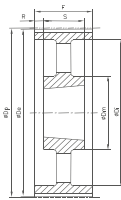
Description	Number of teeth	Type	Material	D _p (mm)	D _e (mm)	D _f (mm)	F (mm)	S (mm)	R (mm)	D _m (mm)	D _i (mm)	Taper bushing	Weight without bushing (=kg)
H - Pitch 12.7 mm for belt width 100													
TB 16 H 100	16	5F	ST	64.68	63.31	70	31	22	9	-	45	1108	0.400
TB 18 H 100	18	5F	ST	72.77	71.39	79	31	25	6	-	52	1210	0.500
TB 19 H 100	19	5F	ST	76.81	75.44	82.5	31	25	6	-	56	1210	0.600
TB 20 H 100	20	5F	ST	80.55	79.48	87	31	25	6	-	60	1210	0.700
TB 21 H 100	21	5F	ST	84.89	83.52	91	32	25	7	-	64	1210	0.800
TB 22 H 100	22	5F	ST	88.94	87.56	94	32	25	7	-	67	1210	0.900
TB 23 H 100	23	5F	ST	92.98	91.61	97	32	25	7	-	70	1610	0.900
TB 24 H 100	24	5F	ST	97.02	95.65	102	32	25	7	-	74	1610	1.000
TB 25 H 100	25	5F	ST	101.06	99.69	106	32	25	7	-	77	1610	1.000
TB 26 H 100	26	5F	ST	105.11	103.73	112	32	25	7	-	82	1610	1.200
TB 27 H 100	27	5F	ST	109.15	107.78	115	32	25	7	-	85	1610	1.300
TB 28 H 100	28	5F	ST	113.19	111.82	119.0	32	25	7	-	90	1610	1.500
TB 30 H 100	30	5F	ST	121.28	119.90	127.0	32	25	7	-	98	1610	1.700
TB 32 H 100	32	5WF	ST	129.36	127.99	135.0	32	25	7	80	106	1610	2.000
TB 36 H 100	36	5WF	ST	145.53	144.16	152.0	32	25	7	92	121	1610	2.700
TB 40 H 100	40	5WF	ST	161.70	160.33	168.0	32	25	7	92	138	1610	3.600
TB 44 H 100	44	3WF	ST	177.87	176.50	184.0	32	32	-	106	152	2012	3.800
TB 48 H 100	48	3WF	ST	194.04	192.67	200.0	32	32	-	106	169	2012	3.200
TB 60 H 100	60	9A	GG	242.55	241.18	-	34	32	1	92	223	2012	4.800
TB 72 H 100	72	9A	GG	291.06	289.69	-	34	32	1	92	270	2012	5.700
TB 84 H 100*	84	9A	GG	339.57	338.20	-	34	32	1	92	318	2012	6.800
TB 96 H 100*	96	7A	GG	388.08	386.71	-	34	45	5.5	106	366	2517	8.200
TB 120 H 100*	120	7A	GG	485.10	483.73	-	34	45	5.5	106	462	2517	12.100
H - Pitch 12.7 mm for belt width 150													
TB 18 H 150	18	5F	ST	72.77	71.39	79	45	25	20	-	-	1210	0.600
TB 19 H 150	19	5F	ST	76.81	75.44	82.5	45	25	20	-	-	1210	0.700
TB 20 H 150	20	5F	ST	80.55	79.48	87	45	25	20	-	-	1210	0.800
TB 21 H 150	21	5F	ST	84.89	83.52	91	45	25	20	-	-	1210	1.000
TB 22 H 150	22	5F	ST	88.94	87.56	94	45	25	20	-	-	1210	1.200
TB 23 H 150	23	5F	ST	92.98	91.61	97	45	25	20	-	-	1610	1.300
TB 24 H 150	24	5F	ST	97.02	95.65	102	45	25	20	-	-	1610	1.200
TB 25 H 150	25	5F	ST	101.06	99.69	106	45	25	20	-	-	1610	1.200
TB 26 H 150	26	5F	ST	105.11	103.73	112	45	25	20	-	-	1610	1.400
TB 27 H 150	27	5F	ST	109.15	107.78	115	45	25	20	-	-	1610	1.600
TB 28 H 150	28	5F	ST	113.19	111.82	120	45	25	20	-	-	1610	1.800
TB 30 H 150	30	5F	ST	121.28	119.90	128	45	25	20	-	-	1610	2.000
TB 32 H 150	32	5WF	ST	129.36	127.99	135	45	25	20	80	-	1610	2.300
TB 36 H 150	36	5WF	ST	145.53	144.16	150	45	25	20	92	118	1610	3.100
TB 40 H 150	40	5WF	ST	161.70	160.33	168	45	25	20	92	134	1610	4.000
TB 44 H 150	44	5WF	ST	177.87	176.50	184	45	32	13	106	150	2012	4.400
TB 48 H 150	48	5WF	ST	194.04	192.67	200	45	32	13	106	166	2012	4.800
TB 60 H 150	60	9A	GG	242.55	241.18	-	46	32	7.5	92	215	2517	5.400
TB 72 H 150	72	9A	GG	291.06	289.69	-	46	32	7.5	92	263	2517	6.500

Description	Number of teeth	Type	Material	D _p (mm)	D _e (mm)	D _f (mm)	F (mm)	S (mm)	R (mm)	D _m (mm)	D _i (mm)	Taper bushing	Weight without bushing (=kg)					
TB 84 H 150*	84	9A	GG	339.57	338.20	-	46	32	7.5	92	318	2012	8.400					
TB 96 H 150*	96	9A	GG	388.08	386.71	-	46	45	0.5	106	366	2517	11.000					
TB 120 H 150*	120	9A	GG	485.10	483.73	-	46	45	0.5	106	462	2517	14.800					
H - Pitch 12.7 mm for belt width 200																		
TB 18 H 200	18	5F	ST	72.77	71.39	79	58	25	33	-	52	1210	0.800					
TB 19 H 200	19	5F	ST	76.81	75.44	82.5	58	25	33	-	56	1610	0.900					
TB 20 H 200	20	5F	ST	80.85	79.48	87	58	25	33	-	60	1610	1.000					
TB 21 H 200	21	5F	ST	84.89	83.52	91	58	25	33	-	64	1610	1.700					
TB 22 H 200	22	5F	ST	88.94	87.56	94	58	25	33	-	67	1610	1.500					
TB 23 H 200	23	5F	ST	92.98	91.61	97	58	25	33	-	70	1610	1.800					
TB 24 H 200	24	5F	ST	97.02	95.65	102	58	25	33	-	74	1610	1.500					
TB 25 H 200	25	5F	ST	101.06	99.69	106	58	25	33	-	77	1610	1.500					
TB 26 H 200	26	5F	ST	105.11	103.73	112	58	25	33	-	82	1610	1.800					
TB 27 H 200	27	5F	ST	109.15	107.78	115	58	25	33	-	85	1610	1.900					
TB 28 H 200	28	5F	ST	113.19	111.82	120	58	25	33	-	90	1610	1.900					
TB 30 H 200	30	5F	ST	121.28	119.90	128	58	25	33	-	98	1610	2.300					
TB 32 H 200	32	5F	ST	129.36	127.99	135	58	32	26	-	106	2012	3.000					
TB 36 H 200	36	5WF	ST	145.53	144.16	150	58	32	26	80	121	2012	3.000					
TB 40 H 200	40	5WF	ST	161.70	160.33	168	58	32	26	80	138	2012	3.600					
TB 44 H 200	44	5WF	ST	177.87	176.50	184	58	32	26	80	152	2012	4.500					
TB 48 H 200	48	5WF	ST	194.04	192.67	200	58	45	13	90	169	2517	4.600					
TB 60 H 200	60	9A	GG	242.55	241.18	-	60	45	7.5	90	223	2517	7.000					
TB 72 H 200	72	9A	GG	291.06	289.69	-	60	45	7.5	100	270	2517	8.000					
TB 84 H 200*	84	9A	GG	339.57	338.20	-	60	45	7.5	100	318	2517	9.000					
TB 96 H 200*	96	9A	GG	388.08	386.71	-	60	45	7.5	120	366	2517	11.500					
TB 120 H 200*	120	9A	GG	485.10	483.73	-	60	45	7.5	120	462	2517	15.400					
H - Pitch 12.7 mm for belt width 300																		
TB 20 H 300	20	4F	ST	80.85	79.48	87	84	38	23	-	60	1615	1.500					
TB 21 H 300	21	4F	ST	84.89	83.52	91	84	38	23	-	64	1615	1.200					
TB 22 H 300	22	4F	ST	88.94	87.56	94	84	38	23	-	67	1615	1.600					
TB 23 H 300	23	4F	ST	92.98	91.61	97	84	38	23	-	70	1615	1.800					
TB 24 H 300	24	4F	ST	97.02	95.65	102	84	38	23	-	74	1615	2.100					
TB 25 H 300	25	4F	ST	101.06	99.69	106	84	38	23	-	77	1615	2.000					
TB 26 H 300	26	4F	ST	105.11	103.73	112	84	38	23	-	82	1615	2.700					
TB 27 H 300	27	4F	ST	109.15	107.78	115	84	32	26	-	85	2012	3.000					
TB 28 H 300	28	4F	ST	113.19	111.82	120	84	32	26	-	90	2012	2.400					
TB 30 H 300	30	4F	ST	121.28	119.90	128	84	32	26	-	98	2012	2.900					
TB 32 H 300	32	4F	ST	129.36	127.99	135	84	45	19.5	-	106	2517	3.300					
TB 36 H 300	36	4F	ST	145.53	144.16	150	84	45	19.5	-	121	2517	4.500					
TB 40 H 300	40	4F	ST	161.70	160.33	168	84	45	19.5	-	138	2517	6.000					
TB 44 H 300	44	9WF	ST	177.87	176.50	184	86	45	20.5	-	152	2517	6.600					
TB 48 H 300	48	9WF	ST	194.04	192.67	200	86	45	20.5	119	169	2517	7.600					
TB 60 H 300	60	9A	GG	242.55	241.18	-	86	45	20.5	119	223	2517	8.400					
TB 72 H 300	72	9A	GG	291.06	289.69	-	86	45	20.5	119	270	2517	10.400					
TB 84 H 300*	84	9A	GG	339.57	338.20	-	86	45	20.5	119	318	2517	12.500					
TB 96 H 300*	96	9A	GG	388.08	386.71	-	86	76	5	119	366	3030	14.200					
TB 120 H 300*	120	9A	GG	485.10	483.73	-	86	76	5	119	462	3030	18.800					
Taper bushing	1108			1210			1610			1615			2012		2517		3030	
Bore d ₂ (mm) from... to...	10-28			11-32			14-42			14-42			14-50		16-65		35-75	

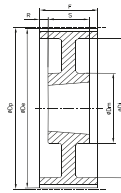
GG = Cast iron ST = Steel **We reserve the right to make technical changes.** * Non stock items. Bore diameters d₂ see page 4.



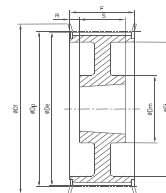
Ausf. 5F



Ausf. 9A



Ausf. 9W

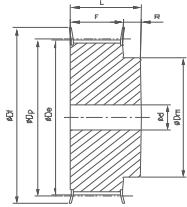


Ausf. 9WF

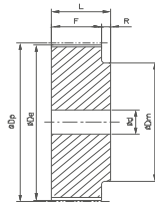
Description	Number of teeth	Type	Material	D _p (mm)	D _e (mm)	D _f (mm)	F (mm)	S (mm)	R (mm)	D _m (mm)	D _i (mm)	Taper bushing	Weight without bushing (≈kg)
XH - Pitch 22.225 mm for belt width 200													
TB 18 XH 200*	18	5F	GG	127.34	124.55	140	64	45	19	-	95	2517	2.600
TB 20 XH 200*	20	5F	GG	141.49	138.69	155	64	45	19	-	110	2517	3.600
TB 22 XH 200*	22	5F	GG	155.64	152.84	170	64	45	19	-	120	2517	4.800
TB 24 XH 200*	24	5F	GG	169.79	166.99	184	64	45	19	-	135	2517	6.100
TB 26 XH 200*	26	5F	GG	183.94	181.14	198	64	45	19	-	150	2517	7.400
TB 28 XH 200*	28	9WF	GG	198.08	195.29	212	64	45	9.5	120	165	2517	9.000
TB 30 XH 200*	30	9WF	GG	212.23	209.44	227	64	45	9.5	120	180	2517	8.600
TB 32 XH 200*	32	9WF	GG	226.38	223.59	240	64	45	9.5	120	195	2517	9.800
TB 40 XH 200*	40	9WF	GG	282.98	280.18	297	64	51	9.5	160	245	3020	13.300
TB 48 XH 200*	48	9W	GG	339.57	336.78	-	64	51	6.5	160	300	3020	19.000
XH - Pitch 22.225 mm for belt width 300													
TB 18 XH 300*	18	5F	GG	127.34	124.55	140	90	45	45	-	95	2517	3.700
TB 20 XH 300*	20	5F	GG	141.49	138.69	155	90	45	45	-	110	2517	4.700
TB 22 XH 300*	22	5F	GG	155.64	152.84	170	90	45	45	-	120	2517	6.000
TB 24 XH 300*	24	5F	GG	169.79	166.99	184	90	45	45	-	135	2517	7.600
TB 26 XH 300*	26	5F	GG	183.94	181.14	198	90	45	45	-	150	2517	9.800
TB 28 XH 300*	28	5F	GG	198.08	195.29	212	90	51	39	-	165	3020	11.600
TB 30 XH 300*	30	5F	GG	212.23	209.44	227	90	51	39	-	180	3020	11.900
TB 32 XH 300*	32	5F	GG	226.38	223.59	240	90	51	39	-	195	3020	13.800
TB 40 XH 300*	40	9WF	GG	282.98	280.18	297	90	51	19.5	160	245	3020	19.500
TB 48 XH 300*	48	9A	GG	339.57	336.78	-	90	51	19.5	160	300	3020	27.000
XH - Pitch 22.225 mm for belt width 400													
TB 20 XH 400*	20	5F	GG	141.49	138.69	155	119	45	74	-	110	2517	6.000
TB 22 XH 400*	22	5F	GG	155.64	152.84	170	119	45	74	-	120	2517	7.200
TB 24 XH 400*	24	5F	GG	169.79	166.99	184	119	51	68	-	135	3020	8.400
TB 26 XH 400*	26	5F	GG	183.94	181.14	198	119	51	68	-	150	3020	10.300
TB 28 XH 400*	28	5F	GG	198.08	195.29	212	119	51	68	-	165	3020	12.300
TB 30 XH 400*	30	5F	GG	212.23	209.44	227	119	51	68	-	180	3020	14.300
TB 32 XH 400*	32	5F	GG	226.38	223.59	240	119	51	68	-	195	3020	19.900
TB 40 XH 400*	40	9WF	GG	282.98	280.18	297	119	89	15	160	245	3535	24.600
TB 48 XH 400*	48	9W	GG	339.57	336.78	-	119	89	15	160	300	3535	30.000

Taper bushing	2517	3020	3535	4040
Bore d ₂ (mm) from... to...	16-65	25-75	35-90	40-100

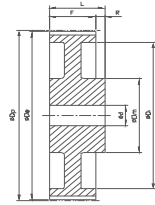
GG = Cast iron ST = Steel **We reserve the right to make technical changes.** * Non stock items.



Ausf. 6F



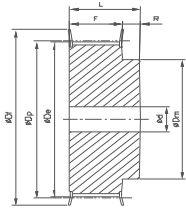
Ausf. 6



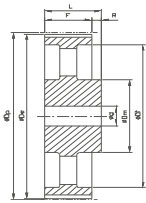
Ausf. 6W

Description	Number of teeth	Type	Material	D _p (mm)	D _s (mm)	D _f (mm)	F (mm)	L (mm)	D _m (mm)	D _i (mm)	Pilot bore d (mm)	Finished bore hole d _{max} (mm)	Weight (=kg)
XL - Pitch 5.08 mm for belt width 025. 031. 037													
10 XL 037	10	6F	ST/AL	16.17	15.66	23	14.3	20	9,5	-	-	6	0.020
11 XL 037	11	6F	ST/AL	17.79	17.28	23	14.3	20	9,5	-	-	6	0.020
12 XL 037	12	6F	ST/AL	19.40	18.90	25	14.3	20	10	-	-	8	0.030
14 XL 037	14	6F	ST/AL	22.64	22.13	28	14.3	20	15	-	-	10	0.040
15 XL 037	15	6F	ST/AL	24.26	23.75	28	14.3	20	15	-	-	11	0.040
16 XL 037	16	6F	ST/AL	25.87	25.36	32	14.3	20	16	-	-	13	0.050
18 XL 037	18	6F	ST/AL	29.11	28.60	35	14.3	20	20	-	-	14	0.060
20 XL 037	20	6F	ST/AL	32.34	31.83	38	14.3	22	24	-	-	18	0.080
21 XL 037	21	6F	ST/AL	33.96	33.45	38	14.3	22	24	-	-	18	0.090
22 XL 037	22	6F	ST/AL	35.57	35.07	41	14.3	22	25	-	-	19	0.100
24 XL 037	24	6F	ST/AL	38.81	38.30	44	14.3	22	30	-	-	21	0.120
26 XL 037	26	6F	ST/AL	42.04	41.53	48	14.3	22	30	-	8	23	0.140
28 XL 037	28	6F	ST/AL	45.28	44.77	51	14.3	22	34	-	8	23	0.160
30 XL 037	30	6F	ST/AL	48.51	48.00	54	14.3	22	38	-	8	23	0.190
32 XL 037	32	6F	ST/AL	51.74	51.24	57	14.3	25	38	-	8	23	0.110
36 XL 037	36	6	ST/AL	58.21	57.70	-	14.3	25	45	-	8	23	0.130
40 XL 037	40	6	ST/AL	64.68	64.17	-	14.3	25	45	-	8	23	0.170
42 XL 037	42	6	ST/AL	67.91	67.41	-	14.3	25	45	-	8	23	0.130
44 XL 037	44	6	ST/AL	71.15	70.64	-	14.3	25	45	-	8	23	0.150
48 XL 037	48	6W	ST/AL	77.62	77.11	-	14.3	25	45	61	10	23	0.160
60 XL 037	60	6W	ST/AL	97.02	96.51	-	14.3	25	45	80	10	23	0.180
72 XL 037	72	6W	ST/AL	116.42	115.92	-	14.3	25	45	100	10	23	0.230

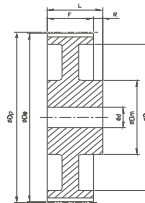
AL = Aluminium ST = Steel GG = Cast iron **We reserve the right to make technical changes.** * Non stock items.



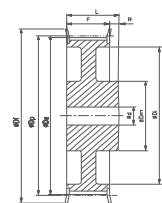
Ausf. 6F



Ausf. 6A



Ausf. 6W



Ausf. 6WF

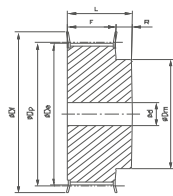
Description	Number of teeth	Type	Material	D _p (mm)	D _e (mm)	D _f (mm)	F (mm)	L (mm)	D _m (mm)	D _i (mm)	Pilot bore d (mm)	Finished bore hole d _{max} (mm)	Weight (≈kg)
L - Pitch 9.525 mm for belt width 050													
10 L 050	10	6F	ST	30.32	29.56	37	19	28	20	-	8	13	0.110
12 L 050	12	6F	ST	36.38	35.62	43	19	30	24	-	8	17	0.190
13 L 050	13	6F	ST	39.41	38.65	44	19	30	28	-	8	19	0.210
14 L 050	14	6F	ST	42.45	41.68	48	19	30	28	-	8	20	0.250
15 L 050	15	6F	ST	45.48	44.72	51	19	30	34	-	8	23	0.300
16 L 050	16	6F	ST	48.51	47.75	54	19	32	36	-	8	23	0.330
17 L 050	17	6F	ST	51.54	50.78	57	19	32	36	-	10	24	0.360
18 L 050	18	6F	ST	54.57	53.81	60	19	32	40	-	10	24	0.410
19 L 050	19	6F	ST	57.61	56.84	64	19	32	40	-	10	24	0.450
20 L 050	20	6F	ST	60.64	59.88	66.5	19	32	40	-	10	28	0.500
21 L 050	21	6F	ST	63.67	62.91	70	19	32	45	-	10	28	0.550
22 L 050	22	6F	ST	66.70	65.94	75	19	32	45	-	10	30	0.620
24 L 050	24	6F	ST	72.77	72.00	79	19	32	55	-	10	30	0.680
26 L 050	26	6F	ST	78.83	78.07	86	19	32	58	-	11	30	0.820
28 L 050	28	6F	ST	84.89	84.13	91	19	32	58	-	11	30	0.920
30 L 050	30	6F	ST	90.96	90.20	97	19	32	70	-	11	30	1.100
32 L 050	32	6F	ST	97.02	96.26	102	19	32	70	-	11	30	1.200
36 L 050	36	6F	ST	109.15	108.39	115	19	32	70	-	11	30	1.000
40 L 050	40	6WF	ST	121.28	120.51	128	19	32	70	100	11	30	1.100
44 L 050	44	6WF	ST	133.40	132.64	142	19	32	70	112	11	30	1.200
48 L 050	48	6WF	ST	145.53	144.77	150	19	32	70	124	11	30	1.300
60 L 050	60	6W	GG	181.91	181.15	-	19	42	75	160	14	30	1.300
72 L 050	72	6A	GG	218.30	217.53	-	19	42	75	197	14	30	1.700
84 L 050	84	6A	GG	254.68	253.92	-	19	42	75	233	14	30	1.900
L - Pitch 9.525 mm for belt width 075													
10 L 075	10	6F	ST	30.32	29.56	37	25	38	20	-	8	13	0.150
12 L 075	12	6F	ST	36.38	35.62	43	25	38	24	-	8	17	0.230
13 L 075	13	6F	ST	39.41	38.65	44	25	38	28	-	8	19	0.260
14 L 075	14	6F	ST	42.45	41.68	48	25	38	28	-	11	20	0.320
15 L 075	15	6F	ST	45.48	44.72	51	25	38	34	-	11	23	0.350
16 L 075	16	6F	ST	48.51	47.75	54	25	38	36	-	11	23	0.420
17 L 075	17	6F	ST	51.54	50.78	57	25	38	36	-	11	24	0.450
18 L 075	18	6F	ST	54.57	53.81	60	25	38	40	-	11	24	0.510
19 L 075	19	6F	ST	57.61	56.84	64	25	38	40	-	11	24	0.570
20 L 075	20	6F	ST	60.64	59.88	66.5	25	38	45	-	11	28	0.630
21 L 075	21	6F	ST	63.67	62.91	70	25	38	45	-	11	28	0.700
22 L 075	22	6F	ST	66.70	65.94	75	25	38	55	-	11	30	0.750
24 L 075	24	6F	ST	72.77	72.00	79	25	38	58	-	11	30	0.850
26 L 075	26	6F	ST	78.83	78.07	86	25	38	58	-	11	30	1.000
28 L 075	28	6F	ST	84.89	84.13	91	25	38	70	-	11	30	1.200
30 L 075	30	6F	ST	90.96	90.20	97	25	38	70	-	11	30	1.400
32 L 075	32	6F	ST	97.02	96.26	102	25	38	70	-	11	30	1.500
36 L 075	36	6F	ST	109.15	108.39	115	25.0	38	70	-	11	32	1.300



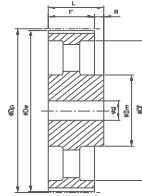
optibelt **ZRS** Timing Belt Pulleys for Plain Boring
Profile L

Description	Number of teeth	Type	Material	D _p (mm)	D _e (mm)	D _i (mm)	F (mm)	L (mm)	D _m (mm)	D _t (mm)	Pilot bore d (mm)	Finished bore hole d _{max} (mm)	Weight (=kg)
40 L 075	40	6WF	ST	121.28	120.51	128	25.0	38	70	100	11	35	1.600
44 L 075	44	6WF	ST	133.40	132.64	142	25.4	38	70	70	11	35	1.700
48 L 075	48	6WF	ST	145.53	144.77	150	25.4	38	70	70	14	35	1.900
60 L 075	60	6A	GG	181.91	181.15	-	25.4	45	75	75	14	35	1.800
72 L 075	72	6A	GG	218.30	217.53	-	25.4	45	75	75	14	35	2.300
84 L 075	84	6A	GG	254.68	253.92	-	25.4	45	75	75	14	35	2.500
L - Pitch 9.525 mm for belt width 100													
10 L 100	10	6F	ST	30.32	29.56	37	31.8	45	20	-	8	13	0.810
12 L 100	12	6F	ST	36.38	35.62	43	31.8	45	24	-	8	17	0.290
13 L 100	13	6F	ST	39.41	38.65	44	31.8	45	28	-	8	19	0.300
14 L 100	14	6F	ST	42.45	41.68	48	31.8	45	28	-	11	20	0.380
15 L 100	15	6F	ST	45.48	44.72	51	31.8	45	34	-	11	23	0.400
16 L 100	16	6F	ST	48.51	47.75	54	31.8	45	36	-	11	23	0.510
17 L 100	17	6F	ST	51.54	50.78	57	31.8	45	36	-	11	24	0.540
18 L 100	18	6F	ST	54.57	53.81	60	31.8	45	40	-	11	24	0.620
19 L 100	19	6F	ST	57.61	56.84	64	31.8	45	40	-	11	24	0.690
20 L 100	20	6F	ST	60.64	59.88	66.5	31.8	45	45	-	11	28	0.760
21 L 100	21	6F	ST	63.67	62.91	70	31.8	45	45	-	11	28	0.820
22 L 100	22	6F	ST	66.70	65.94	75	31.8	45	55	-	11	30	0.920
24 L 100	24	6F	ST	72.77	72.00	79	31.8	45	58	-	11	30	1.100
26 L 100	26	6F	ST	78.83	78.07	86	31.8	45	58	-	11	30	1.300
28 L 100	28	6F	ST	84.89	84.13	91	31.8	45	70	-	11	30	1.400
30 L 100	30	6F	ST	90.96	90.20	97	31.8	45	70	-	11	30	1.700
32 L 100	32	6F	ST	97.02	96.26	102	31.8	45	70	-	11	30	1.800
36 L 100	36	6F	ST	109.15	108.39	115	31.8	45	70	-	11	32	1.500
40 L 100	40	6WF	ST	121.28	120.51	128	31.8	45	70	100	11	35	1.800
44 L 100	44	6WF	ST	133.40	132.64	142	31.8	45	70	112	11	35	1.900
48 L 100	48	6WF	ST	145.53	144.77	150	31.8	45	70	124	11	35	2.100
60 L 100	60	6W	GG	181.91	181.15	-	31.8	50	75	160	14	35	2.000
72 L 100	72	6A	GG	218.30	217.53	-	31.8	50	75	197	14	35	2.500
84 L 100	84	6A	GG	254.68	253.92	-	31.8	50	75	233	14	35	2.700

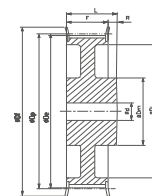
AL = Aluminium ST = Steel GG = Cast iron **We reserve the right to make technical changes.** * Non stock items.



Ausf. 6F



Ausf. 6A



Ausf. 6WF

Description	Number of teeth	Type	Material	D _p (mm)	D _e (mm)	D _i (mm)	F (mm)	L (mm)	D _m (mm)	D _i (mm)	Pilot bore d (mm)	Finished bore hole d _{max} (mm)	Weight (≈kg)
H - Pitch 12.7 mm for belt width 075													
14 H 075	14	6F	ST	56.60	55.22	64	26.4	40	40	-	8	24	0.500
16 H 075	16	6F	ST	64.68	63.31	70	26.4	40	45	-	8	26	0.600
18 H 075	18	6F	ST	72.77	71.39	79	26.4	40	55	-	11	32	0.800
19 H 075	19	6F	ST	76.81	75.44	82.5	26.4	40	60	-	11	35	1.000
20 H 075	20	6F	ST	80.85	79.48	87	26.4	40	62	-	11	35	1.100
21 H 075	21	6F	ST	84.89	83.52	91	26.4	40	65	-	11	38	1.200
22 H 075	22	6F	ST	88.94	87.56	94	26.4	40	68	-	11	38	1.400
24 H 075	24	6F	ST	97.02	95.65	102	26.4	40	72	-	11	42	1.600
26 H 075	26	6F	ST	105.11	103.73	112	26.4	40	80	-	11	45	1.800
28 H 075	28	6F	ST	113.19	111.82	120	26.4	40	80	-	11	45	2.000
30 H 075	30	6F	ST	121.28	119.90	128	26.4	40	80	-	11	45	2.100
32 H 075	32	6F	ST	129.36	127.99	135	26.4	40	80	-	11	45	2.200
36 H 075	36	6F	ST	145.53	144.16	150	26.4	40	80	-	11	45	2.400
40 H 075	40	6F	ST	161.70	160.33	168	26.4	40	80	-	11	45	2.800
44 H 075	44	6WF	GG	177.87	176.50	184	26.4	40	80	150	14	45	2.700
48 H 075	48	6WF	GG	194.04	192.67	200	26.4	45	90	166	14	50	3.000
H - Pitch 12.7 mm for belt width 100													
14 H 100	14	6F	ST	56.60	55.22	64	31.8	45	40	-	11	24	0.650
16 H 100	16	6F	ST	64.68	63.31	70	31.8	45	45	-	11	28	0.850
18 H 100	18	6F	ST	72.77	71.39	79	31.8	45	55	-	14	32	1.100
19 H 100	19	6F	ST	76.81	75.44	82.5	31.8	45	60	-	14	34	1.200
20 H 100	20	6F	ST	80.85	79.48	87	31.8	45	62	-	14	35	1.400
21 H 100	21	6F	ST	84.89	83.52	91	31.8	45	65	-	14	38	1.600
22 H 100	22	6F	ST	88.94	87.56	94	31.8	45	68	-	14	41	1.700
24 H 100	24	6F	ST	97.02	95.65	102	31.8	45	72	-	14	45	2.000
26 H 100	26	6F	ST	105.11	103.73	112	31.8	45	80	-	14	32	1.400
28 H 100	28	6F	ST	113.19	111.82	120	31.8	45	80	-	14	35	1.600
30 H 100	30	6F	ST	121.28	119.90	128	31.8	45	80	-	14	35	1.700
32 H 100	32	6F	ST	129.36	127.99	135	31.8	45	80	-	14	40	2.200
36 H 100	36	6WF	ST	145.53	144.16	150	31.8	45	80	118	14	45	3.000
40 H 100	40	6WF	ST	161.70	160.33	168	31.8	45	80	134	14	45	2.800
44 H 100	44	6WF	GG	177.87	176.50	184	31.8	50	80	150	14	45	3.100
48 H 100	48	6WF	GG	194.04	192.67	200	31.8	50	90	166	14	45	3.300
60 H 100	60	6A	GG	242.55	241.18	-	31.8	50	90	215	19	45	5.500
72 H 100	72	6A	GG	291.06	289.69	-	31.8	55	100	263	19	45	7.100
84 H 100*	84	6A	GG	339.57	338.20	-	31.8	55	100	312	19	45	8.200
96 H 100*	96	6A	GG	388.08	386.71	-	31.8	60	120	360	19	45	9.900
120 H 100*	120	6A	GG	485.10	483.73	-	31.8	60	120	458	19	50	13.100
H - Pitch 12.7 mm for belt width 150													
14 H 150	14	6F	ST	56.60	55.22	64	46	58	40	-	11	24	0.820
16 H 150	16	6F	ST	64.68	63.31	70	46	58	45	-	11	28	1.100
18 H 150	18	6F	ST	72.77	71.39	79	46	58	55	-	14	32	1.500
19 H 150	19	6F	ST	76.81	75.44	83	46	58	60	-	14	34	1.700

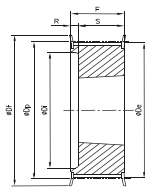
Description	Number of teeth	Type	Material	d _p (mm)	d _e (mm)	D _i (mm)	F (mm)	L (mm)	D _m (mm)	D _i (mm)	Pilot bore d (mm)	Finished bore hole d _{max} (mm)	Weight (=kg)
20 H 150	20	6F	ST	80.85	79.48	87	46	58	65	-	14	35	1.800
21 H 150	21	6F	ST	84.89	83.52	91	46	58	65	-	14	38	2.200
22 H 150	22	6F	ST	88.94	87.56	94	46	58	68	-	14	41	2.300
24 H 150	24	6F	ST	97.02	95.65	102	46	58	72	-	14	45	2.600
26 H 150	26	6F	ST	105.11	103.73	112	46	58	80	-	14	32	1.700
28 H 150	28	6F	ST	113.19	111.82	120	46	58	80	-	14	35	1.900
30 H 150	30	6F	ST	121.28	119.90	128	46	58	80	-	14	35	2.100
32 H 150	32	6F	ST	129.36	127.99	135	46	58	80	-	14	40	2.600
36 H 150	36	6WF	ST	145.53	144.16	150	46	58	80	118	14	45	3.200
40 H 150	40	6WF	ST	161.70	160.33	168	46	58	80	134	14	45	3.800
44 H 150	44	6WF	GG	177.87	176.50	184	46	58	80	150	19	45	3.700
48 H 150	48	6WF	GG	194.04	192.67	200	46	65	90	166	19	45	4.000
60 H 150	60	6A	GG	242.55	241.18	-	46	65	90	215	19	48	5.100
72 H 150	72	6A	GG	291.06	289.69	-	46	65	100	263	24	48	7.900
84 H 150*	84	6A	GG	339.57	338.20	-	46	65	100	312	24	48	8.900
96 H 150*	96	6A	GG	388.08	386.71	-	46	65	120	360	24	48	10.100
120 H 150*	120	6A	GG	485.10	483.73	-	46	65	120	458	24	55	17.200
H - Pitch 12.7 mm for belt width 200													
14 H 200	14	6F	ST	56.60	55.22	64	58.7	70	40	-	11	24	1.100
16 H 200	16	6F	ST	64.68	63.31	70	58.7	70	45	-	11	28	1.400
18 H 200	18	6F	ST	72.77	71.39	79	58.7	70	55	-	14	32	1.800
19 H 200	19	6F	ST	76.81	75.44	82.5	58.7	70	60	-	14	34	2.100
20 H 200	20	6F	ST	80.85	79.48	87	58.7	70	62	-	14	35	2.300
21 H 200	21	6F	ST	84.89	83.52	91	58.7	70	65	-	14	38	2.600
22 H 200	22	6F	ST	88.94	87.56	94	58.7	70	68	-	14	41	2.800
24 H 200	24	6F	ST	97.02	95.65	102	58.7	70	72	-	14	45	3.400
26 H 200	26	6F	ST	105.11	103.73	112	58.7	70	80	-	14	35	2.300
28 H 200	28	6F	ST	113.19	111.82	120	58.7	70	80	-	14	35	2.500
30 H 200	30	6F	ST	121.28	119.90	128	58.7	70	80	-	14	40	2.900
32 H 200	32	6F	ST	129.36	127.99	135	58.7	70	80	-	14	40	3.200
36 H 200	36	6WF	ST	145.53	144.16	150	58.7	70	80	118	14	45	3.800
40 H 200	40	6WF	ST	161.70	160.33	168	58.7	70	80	134	14	45	4.100
44 H 200	44	6WF	GG	177.87	176.50	184	58.7	70	80	150	19	45	4.400
48 H 200	48	6WF	GG	194.04	192.67	200	58.7	75	90	166	24	48	5.100
60 H 200	60	6A	GG	242.55	241.18	-	58.7	75	90	215	24	50	7.100
72 H 200	72	6A	GG	291.06	289.69	-	58.7	75	100	263	28	50	8.000
84 H 200*	84	6A	GG	339.57	338.20	-	58.7	75	100	312	28	50	12.000
96 H 200*	96	6A	GG	388.08	386.71	-	58.7	75	120	360	28	50	13.600
120 H 200*	120	6A	GG	485.10	483.73	-	58.7	75	120	458	28	57	16.600
H - Pitch 12.7 mm for belt width 300													
16 H 300	16	6F	ST	64.68	63.31	70	85.7	100	45	-	11	28	2.000
18 H 300	18	6F	ST	72.77	71.39	79	85.7	100	54	-	19	32	2.600
19 H 300	19	6F	ST	76.81	75.44	82.5	85.7	100	60	-	19	34	2.900
20 H 300	20	6F	ST	80.85	79.48	87	85.7	100	62	-	19	35	3.200
21 H 300	21	6F	ST	84.89	83.52	91	85.7	100	65	-	19	38	3.600
22 H 300	22	6F	ST	88.94	87.56	94	85.7	100	68	-	19	41	4.000
24 H 300	24	6F	ST	97.02	95.65	102	85.7	100	72	-	19	45	4.700
26 H 300	26	6F	ST	105.11	103.73	112	85.7	100	80	-	19	35	3.300
28 H 300	28	6F	ST	113.19	111.82	120	85.7	100	80	-	19	35	3.600
30 H 300	30	6F	ST	121.28	119.90	128	85.7	100	80	-	19	40	4.200
32 H 300	32	6F	ST	129.36	127.99	135	85.7	100	80	-	19	40	4.300

optibelt ZRS Timing Belt Pulleys for Plain Boring Profile H

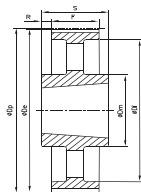


Description	Number of teeth	Type	Material	d_p (mm)	d_c (mm)	D_i (mm)	F (mm)	L (mm)	D_m (mm)	D_i (mm)	Pilot bore d (mm)	Finished bore hole d_{max} (mm)	Weight (\approx kg)
36 H 300	36	6WF	ST	145.53	144.16	150	85.7	100	80	118	19	45	5.200
40 H 300	40	6WF	ST	161.70	160.33	168	85.7	100	80	134	19	45	5.600
44 H 300	44	6WF	GG	177.87	176.50	184	85.7	100	80	150	24	45	5.900
48 H 300	48	6WF	GG	194.04	192.67	200	85.7	100	90	166	24	48	6.600
60 H 300	60	6A	GG	242.55	241.18	-	85.7	100	90	215	24	57	9.900
72 H 300	72	6A	GG	291.06	289.69	-	85.7	100	100	263	28	57	13.000
84 H 300*	84	6A	GG	339.57	338.20	-	85.7	100	100	312	28	57	15.100
96 H 300*	96	6A	GG	388.08	386.71	-	85.7	100	120	360	28	57	18.200
120 H 300*	120	6A	GG	485.10	483.73	-	85.7	100	120	458	28	62	26.000

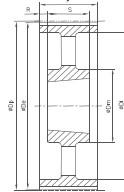
AL = Aluminium ST = Steel GG = Cast iron **We reserve the right to make technical changes.** * Non stock items.



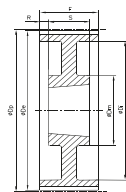
Ausf. 5F



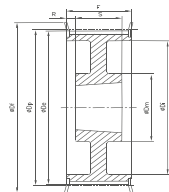
Ausf. 7A



Ausf. 9A



Ausf. 9W



Ausf. 9WF

Description	Number of teeth	Type	Material	D _p (mm)	D _e (mm)	D _f (mm)	F (mm)	D _m (mm)	A (mm)	Pilot bore d (mm)	Finished bore hole d _{max} (mm)	Weight (≈kg)
XH - Pitch 22.225 mm for belt width 200												
18 XH 200*	18	5F	GG	127.34	124.55	140	64	-	18	20	50	5.000
20 XH 200*	20	5F	GG	141.49	138.69	155	64	-	18	20	55	6.000
22 XH 200*	22	5F	GG	155.64	152.84	170	64	-	18	20	65	7.200
24 XH 200*	24	5F	GG	169.79	166.99	184	64	-	18	25	70	8.600
26 XH 200*	26	5F	GG	183.94	181.14	198	64	-	18	25	80	10.100
28 XH 200*	28	9WF	GG	198.08	195.29	212	64	120	18	25	70	9.600
30 XH 200*	30	9WF	GG	212.23	209.44	227	64	120	18	25	70	10.400
32 XH 200*	32	9WF	GG	226.38	223.59	240	64	120	18	25	75	11.200
40 XH 200*	40	9WF	GG	282.98	280.18	297	64	160	18	25	80	16.000
48 XH 200*	48	9W	GG	339.57	336.78	-	64	160	-	30	85	18.400
60 XH 200*	60	7A	GG	424.47	421.67	-	64	190	-	30	85	24.300
72 XH 200*	72	7A	GG	509.36	506.56	-	64	190	-	40	85	28.100
84 XH 200*	84	7A	GG	594.25	591.46	-	64	190	-	40	90	31.900
96 XH 200*	96	7A	GG	679.15	676.35	-	64	190	-	40	90	37.000
XH - Pitch 22.225 mm for belt width 300												
18 XH 300*	18	5F	GG	127.34	124.55	140	90	-	35	20	50	6.800
20 XH 300*	20	5F	GG	141.49	138.69	155	90	-	35	20	55	7.400
22 XH 300*	22	5F	GG	155.64	152.84	170	90	-	35	20	65	9.000
24 XH 300*	24	5F	GG	169.79	166.99	184	90	-	35	25	70	10.600
26 XH 300*	26	5F	GG	183.94	181.14	198	90	-	35	25	80	13.000
28 XH 300*	28	5F	GG	198.08	195.29	212	90	-	35	25	70	12.000
30 XH 300*	30	5F	GG	212.23	209.44	227	90	-	35	25	70	13.000
32 XH 300*	32	5F	GG	226.38	223.59	240	90	-	35	25	75	14.700
40 XH 300*	40	9WF	GG	282.98	280.18	297	90	160	35	25	80	19.900
48 XH 300*	48	9A	GG	339.57	336.78	-	90	160	-	30	85	22.500
60 XH 300*	60	9A	GG	424.47	421.67	-	90	190	-	30	85	31.500
72 XH 300*	72	9A	GG	509.36	506.56	-	90	190	-	40	85	36.400
84 XH 300*	84	7A	GG	594.25	591.46	-	90	190	-	40	90	43.400
96 XH 300*	96	7A	GG	679.15	676.35	-	90	190	-	40	90	48.500
XH - Pitch 22.225 mm for belt width 400												
18 XH 400*	18	5F	GG	127.34	124.55	140	119	-	47	20	50	8.500
20 XH 400*	20	5F	GG	141.49	138.69	155	119	-	47	20	55	9.400
22 XH 400*	22	5F	GG	155.64	152.84	170	119	-	47	20	65	11.500
24 XH 400*	24	5F	GG	169.79	166.99	184	119	-	47	25	70	13.400
26 XH 400*	26	5F	GG	183.94	181.14	198	119	-	47	25	80	15.600
28 XH 400*	28	5F	GG	198.08	195.29	212	119	-	47	25	70	14.500
30 XH 400*	30	5F	GG	212.23	209.44	227	119	-	47	25	70	16.000
32 XH 400*	32	5F	GG	226.38	223.59	240	119	-	47	25	75	18.000
40 XH 400*	40	9WF	GG	282.98	280.18	297	119	160	47	25	80	24.000
48 XH 400*	48	9W	GG	339.57	336.78	-	119	160	-	30	85	30.800
60 XH 400*	60	9A	GG	424.47	421.67	-	119	190	-	30	85	36.200
72 XH 400*	72	9A	GG	509.36	506.56	-	119	190	-	40	85	42.700
84 XH 400*	84	9A	GG	594.25	591.46	-	119	190	-	40	90	49.700
96 XH 400*	96	9A	GG	679.15	676.35	-	119	190	-	40	90	59.900